

# MarkPRO

## Marking Products Catalog



North America Sales & Technical Support

# INDEX

<b>HAND STAMPS</b>	<b>3-10, 17</b>
Code Stamps	10
Cyrillic Hand Stamps	8
Goliath Heavy Duty Hand Stamps	5
Impression Grade Hand Stamps	4
Low Stress Hand Stamps	6
Made In USA Hand Stamps	10
Premium Grade Hand Stamps	3
Replacement Hand Stamp Boxes	17
Reverse Character Hand Stamps	7
Safety Grips for Hand Stamps	7
Symbol Hand Stamps	9
<b>MACHINE STANDS</b>	<b>24</b>
<b>MARKERS (PAINT &amp; INK)</b>	<b>27, 28</b>
Detergent Removable Markers	28
Hi Purity Markers	28
Industrial Ink Markers	28
Paint Markers	27
Water Removable Markers	28
<b>MICRO-MARKERS</b>	<b>8</b>
<b>NUMBERING HEADS</b>	<b>18-21</b>
Auto Indexing Numbering Heads	20-21
Manual Indexing Numbering Heads	18-19
Replacement Numbering Head Wheels	19-20
<b>PRESSES</b>	<b>22, 23, 25, 26</b>
Manual Impact Bench Presses	22
Pneumatic Impact Bench Presses	23
Pneumatic Press Modules	25
Press Energy Modules	25
Press Service Parts	26
<b>TYPE (KITS &amp; LOOSE)</b>	<b>11-14, 17</b>
Euro Series	13
Imperial Series	11
Low Stress Type	14
Pryor Series	12
Replacement Type Boxes	17
<b>TYPE HOLDERS &amp; SHANKS</b>	<b>15, 16, 18, 20</b>
Hand Held Type Holders	15
Machine Press Type Holders	16
Replacement Type Set Boxes	17
Safety Hand Held Type Holders	15
Shanks	16, 18, 20

# Sharp Faced "PREMIUM" Grade Hand Stamps



◆USA STOCK ITEM◆



ORDER NUMBER	US SIZE	METRIC SIZE	PRICE	OVERALL DIMENSIONS
<b>LETTER SETS (A-Z &amp;) 27 STAMPS PER SET</b>				
PP27010	.040"	1.0mm	\$ 80.26	1/4"sq X 2.5"
PP27015	1/16"	1.5mm	\$ 80.26	1/4"sq X 2.5"
PP27020	5/64"	2.0mm	\$ 80.26	1/4"sq X 2.5"
PP27025	3/32"	2.5mm	\$ 80.26	1/4"sq X 2.5"
PP27030	1/8"	3.0mm	\$ 80.26	1/4"sq X 2.5"
PP27040	5/32"	4.0mm	\$ 95.62	3/8"sq X 2.75"
PP27050	3/16"	5.0mm	\$ 95.62	3/8"sq X 2.75"
PP27060	1/4"	6.0mm	\$ 110.86	3/8"sq X 2.75"
PP27080	5/16"	8.0mm	\$ 146.94	1/2"sq X 3.5"
PP27100	3/8"	10.0mm	\$ 167.98	9/16"sq X 3.5"
PP27125	1/2"	12.5mm	\$ 251.64	3/4"sq X 3.5"
<b>NUMBER SETS (0-9) 10 STAMPS PER SET</b>				
PP10010	.040"	1.0mm	\$ 26.70	1/4"sq X 2.5"
PP10015	1/16"	1.5mm	\$ 26.70	1/4"sq X 2.5"
PP10020	5/64"	2.0mm	\$ 26.70	1/4"sq X 2.5"
PP10025	3/32"	2.5mm	\$ 26.70	1/4"sq X 2.5"
PP10030	1/8"	3.0mm	\$ 26.70	1/4"sq X 2.5"
PP10040	5/32"	4.0mm	\$ 31.68	3/8"sq X 2.75"
PP10050	3/16"	5.0mm	\$ 31.68	3/8"sq X 2.75"
PP10060	1/4"	6.0mm	\$ 37.10	3/8"sq X 2.75"
PP10080	5/16"	8.0mm	\$ 48.78	1/2"sq X 3.5"
PP10100	3/8"	10.0mm	\$ 55.44	9/16"sq X 3.5"
PP10125	1/2"	12.5mm	\$ 82.98	3/4"sq X 3.5"
<b>SINGLE STAMPS (LETTERS, NUMBERS, &amp;)</b>				
PP010_*	.040"	1.0mm	\$ 9.24	1/4"sq X 2.5"
PP015_*	1/16"	1.5mm	\$ 9.24	1/4"sq X 2.5"
PP020_*	5/64"	2.0mm	\$ 9.24	1/4"sq X 2.5"
PP025_*	3/32"	2.5mm	\$ 9.24	1/4"sq X 2.5"
PP030_*	1/8"	3.0mm	\$ 9.24	1/4"sq X 2.5"
PP040_*	5/32"	4.0mm	\$ 10.50	3/8"sq X 2.75"
PP050_*	3/16"	5.0mm	\$ 10.50	3/8"sq X 2.75"
PP060_*	1/4"	6.0mm	\$ 12.20	3/8"sq X 2.75"
PP080_*	5/16"	8.0mm	\$ 19.22	1/2"sq X 3.5"
PP100_*	3/8"	10.0mm	\$ 25.24	9/16"sq X 3.5"
PP125_*	1/2"	12.5mm	\$ 33.32	3/4"sq X 3.5"

\*Specify Character: A thru Z, 0 thru 9, or & - e.g.: PP060\_A for letter A

- ◆ PRYOR PREMIUM stamps are hardened and tempered to precise limits to offer long life and maximum safety. Uses range from aluminum to stainless steel to oil & water hardened tool steel.
- ◆ Manufactured from quality controlled Chromium Tool Steel allied to precise heat treatment for maximum durability & safety in use.
- ◆ Hardness is reduced at the striking end to reduce brittleness when being hit.
- ◆ A nickel electroplate finish is applied for corrosion protection.
- ◆ Suitable for marking material up to 40 Rockwell 'C'.

**Sharp Faced**  
**"IMPRESSION" Grade**  
**Quality Stamps at a Lower Cost**



◆USA STOCK ITEM◆



ORDER NUMBER	US SIZE	METRIC SIZE	PRICE	OVERALL DIMENSIONS
<b>LETTER SETS (A-Z &amp;) 27 STAMPS PER SET</b>				
PI27015	1/16"	1.5mm	\$ 57.24	1/4"sq X 2.5"
PI27020	5/64"	2.0mm	\$ 57.24	1/4"sq X 2.5"
PI27025	3/32"	2.5mm	\$ 57.24	1/4"sq X 2.5"
PI27030	1/8"	3.0mm	\$ 57.24	1/4"sq X 2.5"
PI27040	5/32"	4.0mm	\$ 62.04	3/8"sq X 2.75"
PI27050	3/16"	5.0mm	\$ 62.04	3/8"sq X 2.75"
PI27060	1/4"	6.0mm	\$ 78.78	3/8"sq X 2.75"
<b>NUMBER SETS (0-9) 10 STAMPS PER SET</b>				
PI10015	1/16"	1.5mm	\$ 19.10	1/4"sq X 2.5"
PI10020	5/64"	2.0mm	\$ 19.10	1/4"sq X 2.5"
PI10025	3/32"	2.5mm	\$ 19.10	1/4"sq X 2.5"
PI10030	1/8"	3.0mm	\$ 19.10	1/4"sq X 2.5"
PI10040	5/32"	4.0mm	\$ 22.36	3/8"sq X 2.75"
PI10050	3/16"	5.0mm	\$ 22.36	3/8"sq X 2.75"
PI10060	1/4"	6.0mm	\$ 25.92	3/8"sq X 2.75"
<b>COMBO SETS (A-Z) (0-9) 37 STAMPS</b>				
PI37015	1/16"	1.5mm	\$ 72.54	1/4"sq X 2.5"
PI37020	5/64"	2.0mm	\$ 72.54	1/4"sq X 2.5"
PI37025	3/32"	2.5mm	\$ 72.54	1/4"sq X 2.5"
PI37030	1/8"	3.0mm	\$ 72.54	1/4"sq X 2.5"
PI37040	5/32"	4.0mm	\$ 80.18	3/8"sq X 2.75"
PI37050	3/16"	5.0mm	\$ 80.18	3/8"sq X 2.75"
PI37060	1/4"	6.0mm	\$ 99.48	3/8"sq X 2.75"

- ◆PRYOR IMPRESSION economy priced hand stamps are hardened and tempered to offer a long life and maximum safety.
- ◆COMPARE to the competition; these stamps have the same or higher quality construction as their Hand Cut & Heavy Duty hand stamps.
- ◆Pryor Impression stamps feature the most popular sizes. An extended range of sizes are available in Pryor's "Premium" Grade series.
- ◆Uses range from aluminum to stainless steel.
- ◆Manufactured from quality controlled Chromium Tool Steel allied to precise heat treatment for maximum durability & safety in use.
- ◆Hardness is reduced at the striking end to reduce brittleness when being hit.
- ◆The character end is tapered to a hand made finish like all Pryor hand stamps.



**Sharp Faced**  
**"GOLIATH" HD Grade**  
**Our Very Best Hand Stamps**



The GOLIATH Difference



3.0mm GOLIATH stamp TOP  
3.0MM STANDARD stamp BOTTOM



❖USA STOCK ITEM❖

ORDER NUMBER	US SIZE	METRIC SIZE	PRICE	OVERALL DIMENSIONS
<b>LETTER SETS (A-Z &amp;) 27 STAMPS PER SET</b>				
PHD27030	1/8"	3.0mm	\$ 177.72	1/2"sq X 3.5"
PHD27050	3/16"	5.0mm	\$ 240.20	1/2"sq X 3.5"
PHD27060	1/4"	6.0mm	\$ 285.18	9/16"sq X 3.5"
PHD27080	5/16"	8.0mm	\$ 368.08	9/16"sq X 3.5"
PHD27100	3/8"	10.0mm	\$ 387.24	3/4"sq X 4"
PHD27125	1/2"	12.5mm	\$ 550.76	3/4"sq X 4"
<b>NUMBER SETS (0-9) 10 STAMPS PER SET</b>				
PHD10030	1/8"	3.0mm	\$ 59.36	1/2"sq X 3.5"
PHD10050	3/16"	5.0mm	\$ 80.20	1/2"sq X 3.5"
PHD10060	1/4"	6.0mm	\$ 95.26	9/16"sq X 3.5"
PHD10080	5/16"	8.0mm	\$ 122.80	9/16"sq X 3.5"
PHD10100	3/8"	10.0mm	\$ 129.24	3/4"sq X 4"
PHD10125	1/2"	12.5mm	\$ 183.66	3/4"sq X 4"
<b>SINGLE STAMPS (LETTERS, NUMBERS, &amp;)</b>				
PHD030_*	1/8"	3.0mm	\$ 18.58	1/2"sq X 3.5"
PHD050_*	3/16"	5.0mm	\$ 21.52	1/2"sq X 3.5"
PHD060_*	1/4"	6.0mm	\$ 25.06	9/16"sq X 3.5"
PHD080_*	5/16"	8.0mm	\$ 43.64	9/16"sq X 3.5"
PHD100_*	3/8"	10.0mm	\$ 57.36	3/4"sq X 4"
PHD125_*	1/2"	12.5mm	\$ 76.08	3/4"sq X 4"
<i>*Specify Character: A thru Z, 0 thru 9, or &amp; - eg: PHD060_A for letter A</i>				

**PRYOR GOLIATH: "When only the very best is acceptable"**

- ❖ PRYOR GOLIATH Extreme Duty stamps are hardened and tempered to precise limits for the longest life and maximum safety. Uses range from aluminum to stainless steel to oil or water hardened tool steel including many high speed steels.
- ❖ The physical weight & mass of GOLIATH Extreme Duty punches are particularly adapted for continual heavy duty use.
- ❖ Manufactured from top grade Sheffield Chromium Tool Steel, allied to precise heat treatment, Goliath Hand Stamps provide a stamp of outstanding toughness and durability.
- ❖ A safety feature, hardness is reduced at the striking end to reduce brittleness when being hit.
- ❖ A nickel electroplate finish is applied for corrosion protection.
- ❖ Suitable for marking material up to 48 Rockwell 'C'.
- ❖ For maximum safety, use stamp with Safety Holder which allows a hard blow to be struck without the risk of jarring or damaging the fingers of the stamp user.

**Low Metal Stress**  
**"PREMIUM" Grade**  
**Round & Dot Faced**

❖USA STOCK ITEM❖



Ministress Round Face



Dotstress Dot Face



ORDER NUMBER	US SIZE	METRIC SIZE	PRICE	OVERALL DIMENSIONS
<b>MINISTRESS ROUND FACED LETTER SETS (A-Z) 26 STAMPS PER SET</b>				
PPMS26030	1/8"	3.0mm	\$ 174.80	3/8"sq X 2.75"
PPMS26050	3/16"	5.0mm	\$ 208.24	3/8"sq X 2.75"
PPMS26060	1/4"	6.0mm	\$ 240.84	1/2"sq X 3.5"
<b>MINISTRESS ROUND FACED NUMBER SETS (0-9) 10 STAMPS PER SET</b>				
PPMS10030	1/8"	3.0mm	\$ 56.08	3/8"sq X 2.75"
PPMS10050	3/16"	5.0mm	\$ 68.78	3/8"sq X 2.75"
PPMS10060	1/4"	6.0mm	\$ 80.74	1/2"sq X 3.5"
<b>MINISTRESS ROUND FACED SINGLE STAMPS (LETTERS, NUMBERS)</b>				
PPMS030_*	1/8"	3.0mm	\$ 14.94	3/8"sq X 2.75"
PPMS050_*	3/16"	5.0mm	\$ 16.68	3/8"sq X 2.75"
PPMS060_*	1/4"	6.0mm	\$ 19.86	1/2"sq X 3.5"
<i>*Specify Character: A thru Z, 0 thru 9, or &amp; - eg: PPMS060_A for letter A</i>				
<b>DOTSTRESS DOT FACED LETTER SETS (A-Z) 26 STAMPS PER SET FOR EVEN GREATER REDUCED STRESS LEVELS</b>				
PPDS26030	1/8"	3.0mm	\$ 208.56	3/8"sq X 2.75"
PPDS26050	3/16"	5.0mm	\$ 247.84	3/8"sq X 2.75"
PPDS26060	1/4"	6.0mm	\$ 287.44	1/2"sq X 3.5"
PPDS26080	5/16"	8.0mm	\$ 330.20	9/16"sq X 3.5"
<b>DOTSTRESS DOT FACED NUMBER SETS (0-9) 10 STAMPS PER SET FOR EVEN GREATER REDUCED STRESS LEVELS</b>				
PPDS10030	1/8"	3.0mm	\$ 69.32	3/8"sq X 2.75"
PPDS10050	3/16"	5.0mm	\$ 82.04	3/8"sq X 2.75"
PPDS10060	1/4"	6.0mm	\$ 96.30	1/2"sq X 3.5"
PPDS10080	5/16"	8.0mm	\$ 109.84	9/16"sq X 3.5"
<b>DOTSTRESS DOT FACED SINGLE STAMPS (LETTERS, NUMBERS) FOR EVEN GREATER REDUCED STRESS LEVELS</b>				
PPDS030_*	1/8"	3.0mm	\$ 16.44	3/8"sq X 2.75"
PPDS050_*	3/16"	5.0mm	\$ 18.72	3/8"sq X 2.75"
PPDS060_*	1/4"	6.0mm	\$ 22.20	1/2"sq X 3.5"
PPDS080_*	5/16"	8.0mm	\$ 38.58	9/16"sq X 3.5"
<i>*Specify Character: A thru Z, 0 thru 9, or &amp; - eg: PPDS060_A for letter A</i>				

- ❖PRYOR PREMIUM Low Stress stamps are hardened and tempered to precise limits to offer long life and maximum safety. Uses range from aluminum to stainless steel to oil or water hardened tool steel.
- ❖Manufactured from quality controlled Chromium Tool Steel allied to precise heat treatment for maximum durability & safety in use.
- ❖Hardness is reduced at the striking end to reduce brittleness when being hit.
- ❖A nickel electroplate finish is applied for corrosion protection.
- ❖Suitable for marking material up to 40 Rockwell 'C'.
- ❖Choose Round Face MINISTRESS for low stress marking while retaining maximum readability.
- ❖Choose Dot Face DOTSTRESS for even greater reduced stress levels in the material being marked.

**"PREMIUM" Grade  
REVERSE Stamps  
STAMP Holders**



❖USA STOCK ITEM❖

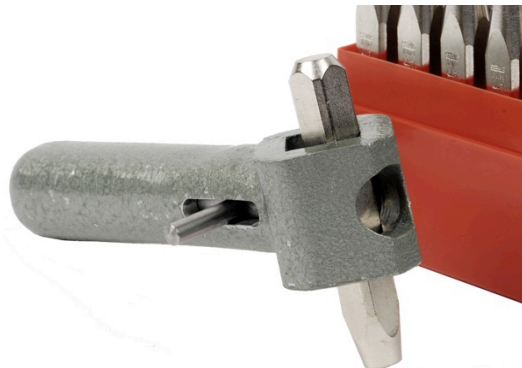


Creates a reversed impression in the material being marked. Used primarily by mold makers.

ORDER NUMBER	US SIZE	METRIC SIZE	PRICE	OVERALL DIMENSIONS
<b>REVERSE LETTER SETS (A-Z &amp;) 27 STAMPS PER SET</b>				
PPR27015	1/16"	1.5mm	\$ 125.56	1/4"sq X 2.5"
PPR27020	5/64"	2.0mm	\$ 125.56	1/4"sq X 2.5"
PPR27030	1/8"	3.0mm	\$ 125.56	1/4"sq X 2.5"
PPR27040	5/32"	4.0mm	\$ 143.70	3/8"sq X 2.75"
PPR27050	3/16"	5.0mm	\$ 143.70	3/8"sq X 2.75"
PPR27060	1/4"	6.0mm	\$ 173.24	3/8"sq X 2.75"
<b>REVERSE NUMBER SETS (0-9) 10 STAMPS PER SET</b>				
PPR10015	1/16"	1.5mm	\$ 41.76	1/4"sq X 2.5"
PPR10020	5/64"	2.0mm	\$ 41.76	1/4"sq X 2.5"
PPR10030	1/8"	3.0mm	\$ 41.76	1/4"sq X 2.5"
PPR10040	5/32"	4.0mm	\$ 49.50	3/8"sq X 2.75"
PPR10050	3/16"	5.0mm	\$ 49.50	3/8"sq X 2.75"
PPR10060	1/4"	6.0mm	\$ 57.86	3/8"sq X 2.75"
<b>REVERSE SINGLE STAMPS (LETTERS, NUMBERS, &amp;)</b>				
PPR015_*	1/16"	1.5mm	\$ 16.46	1/4"sq X 2.5"
PPR020_*	5/64"	2.0mm	\$ 16.46	1/4"sq X 2.5"
PPR030_*	1/8"	3.0mm	\$ 16.46	1/4"sq X 2.5"
PPR040_*	5/32"	4.0mm	\$ 18.68	3/8"sq X 2.75"
PPR050_*	3/16"	5.0mm	\$ 18.68	3/8"sq X 2.75"
PPR060_*	1/4"	6.0mm	\$ 21.52	3/8"sq X 2.75"
<i>*Specify Character: A thru Z, 0 thru 9, or &amp; - eg: PPR060_A for letter A</i>				

**GRIP001**

- ❖Our best Safety Grip features an aluminum cast handle w/spring loaded ram to firmly hold stamps of all sizes securely in place.
- ❖Spring loaded ram allows user to change stamps QUICKLY.
- ❖Can hold all brand stamps with shanks up to 3/4" square
- ❖Designed to provide years of service.



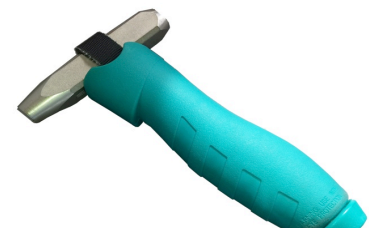
❖USA STOCK ITEM❖

ORDER NUMBER	OVERALL LENGTH	OVERALL HEIGHT	PRICE
<b>SAFETY STAMP HOLDERS</b>			
GRIP001	6-7/16"	1-1/2"	\$ 153.12
GRIP004	6-5/16"	1-7/8"	\$ 52.80

**GRIP004**

- ❖Economy Safety Grip features rubberized handle to reduce impact shock through the grip.
- ❖Stamp is held securely in place by means of a 5/8" wide reinforced belted strap.
- ❖Holds square and round stamps up to 1" shank size.

**SAFETY GRIPS** keep your hands away from the stamp body allowing for a confident, more forceful strike to be made with a hammer.





# "PREMIUM" Grade CYRILLIC Stamps & MICRO MARKER



◆USA STOCK ITEM◆

ORDER NUMBER	US SIZE	METRIC SIZE	PRICE	OVERALL DIMENSIONS
<b>LETTER SETS - 30 STAMPS PER SET</b>				
RUS30030	1/8"	3.0mm	\$ 130.62	1/4"sq X 2.5"
RUS30060	1/4"	6.0mm	\$ 172.92	3/8"sq X 2.75"
RUS30100	3/8"	10.0mm	\$ 377.76	9/16"sq X 3.5"
RUS30125	1/2"	12.5mm	\$ 552.96	3/4"sq X 3.5"

- ◆PRYOR PREMIUM stamps are hardened and tempered to precise limits to offer long life and maximum safety. Uses range from aluminum to stainless steel to oil & water hardened tool steel.
- ◆Manufactured from quality controlled Chromium Tool Steel allied to precise heat treatment for maximum durability & safety in use.
- ◆Hardness is reduced at the striking end to reduce brittleness when being hit.
- ◆A nickel electroplate finish is applied for corrosion protection.
- ◆Suitable for marking material up to 40 Rockwell 'C'.

◆USA STOCK ITEM◆

ORDER NUMBER	STANDARD CHARACTER HEIGHT (")	STANDARD CHARACTER HEIGHT (mm)	PRICE	OVERALL DIMENSIONS
<b>MICRO-MARKER TOOL W/PUNCH TIP</b>				
MM150-18B	3/32"*	2.5mm*	\$ 103.00	5/8"dia X 6"
MM150-TIP	REPLACEMENT PUNCH TIP		\$ 14.32	-

\* Letters, numbers & symbols available below.

- ◆Ideal for punching and inspection stamping.
- ◆Tool comes standard with a Center Punch.
- ◆Optional A-Z, 0-9 and symbol stamps available.
- ◆Characters are 2.5mm (3/32") character height.
- ◆Tool easily slips into pocket.
- ◆Internal mechanism is triggered by pressure using the palm of the hand.
- ◆Impact up to the maximum of 110 lbs force.
- ◆Characters are easily exchanged by removing front tapered nose.
- ◆Center punch ideal for keeping a drill bit from wandering on metal.
- ◆Fast & simple; no air or electricity required.

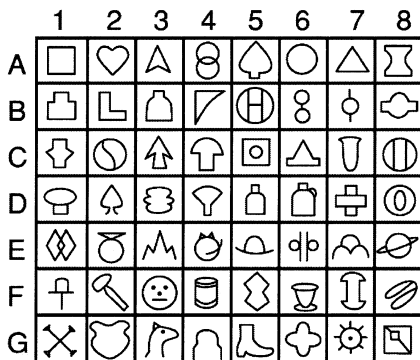
◆USA STOCK ITEM◆

	ORDER NUMBER	US SIZE	METRIC SIZE	PRICE
<b>SINGLE MICRO-MARKER STAMPS</b>				
<b>AVAILABLE IN LETTERS, NUMBERS &amp; SYMBOLS</b>				
SYMBOLS	MMSYM025_*	3/32"	2.5mm	\$ 38.88
LETTERS	MMLET025_*	3/32"	2.5mm	\$ 38.88
NUMBERS	MMNUM025_*	3/32"	2.5mm	\$ 38.88

\*Specify Symbol Number - See chart at left - eg: MMSYM025\_1A

\*Specify letter by replacing \* with letter - MMLET025\_P for letter P

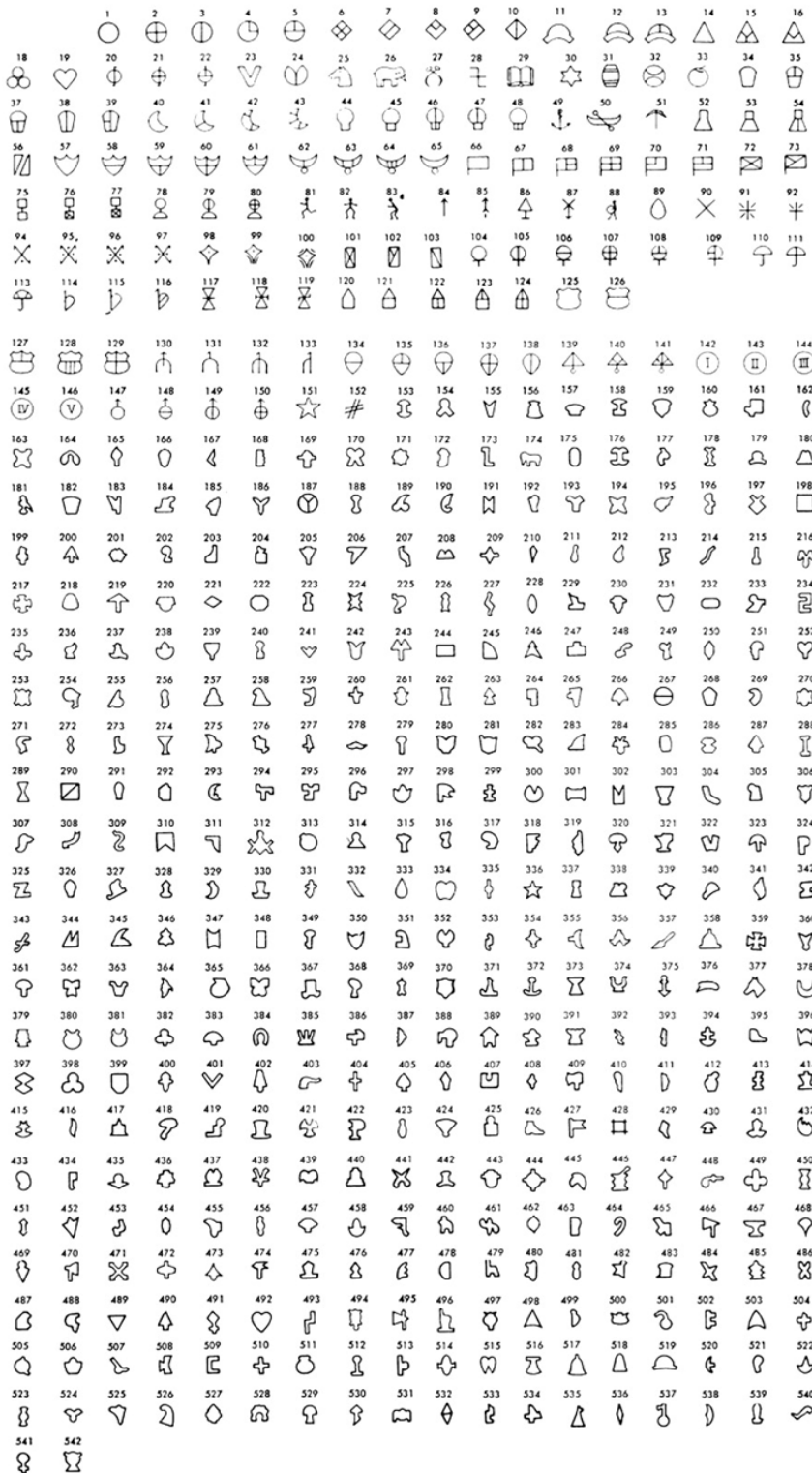
\*Specify number by replacing \* with number - MMNUM025\_8 for number 8







◆MADE TO ORDER; 2-3 WEEK LEAD TIME◆



ORDER NUMBER	CHARACTER HEIGHT	PRICE
<b>SYMBOL STAMPS</b>		
SS-***-018	1/8"	\$ 41.46
SS-***-316	3/16"	\$ 44.82
SS-***-014	1/4"	\$ 49.26
SS-***-516	5/16"	\$ 74.10
SS-***-038	3/8"	\$ 81.12
PRICING REDUCED BASED ON QUANTITY		

CHARACTER HEIGHT	OVERALL DIMENSIONS
1/8"	3/8"sq X 2.75"
3/16"	7/16"sq X 2.75"
1/4"	1/2"sq X 3.0"
5/16"	9/16"sq X 3.125"
3/8"	5/8"sq X 3.125"

### SYMBOL STAMPS

- ◆Over 500 symbols to choose from
- ◆Available in 5 character sizes
- ◆Some symbols available in low stress characters. Call for availability.
- ◆Ideal for use as inspection stamps
- ◆Suitable for daily use on materials up to 30HRC or occasional use on oil or water hardened steels.
- ◆For part number replace \*\*\* with symbol number from chart.

**SEE CATALOG  
PAGE 7 FOR  
OPTIONAL  
HAND STAMP  
HOLDERS.**

# MarkPRO **SPECIALTY Stamps**

## **SAFETY STAMP Grips**

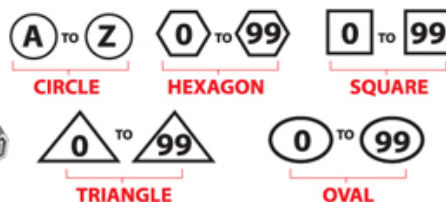
❖USA STOCK ITEM❖

ORDER NUMBER	US SIZE	METRIC SIZE	PRICE	OVERALL DIMENSIONS
<b>"MADE IN USA" Hand Stamp</b>				
PPUSA015	1/16"	1.5mm	\$ 84.48	9/16"sq X 3.5"

- ❖MADE IN USA stamp is hardened and tempered to precise limits to give long life and maximum safety.
- ❖Manufactured from quality controlled Chromium Tool Steel allied to precise heat treatment for maximum durability & safety in use.
- ❖Hardness is reduced at the striking end to reduce brittleness when being hit.
- ❖Suitable for marking material up to 40 Rockwell 'C'.
- ❖Character height is 1/16"; overall inscription width is 3/8"; overall inscription height is 3/16".



❖MADE TO ORDER; 2-3 WEEK LEAD TIME❖



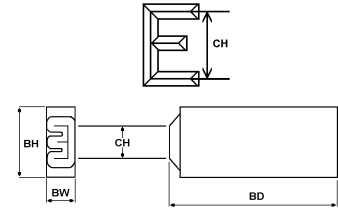
### CODE STAMPS

- ❖5 border shapes to choose from
- ❖Available in 4 character sizes
- ❖Can for use as inspection stamps
- ❖Suitable for daily use on materials up to 30HRC or occasional use on oil or water hardened steels.

CIRCLE BORDER						
CHARACTER SIZE	CHARACTERS (EACH)	A-Z LETTER SETS (SET OF 26)	0-99 NUMBER SETS (SET OF 100)			
3/16" (5.0mm)	CCS050_* \$ 54.44	CCS26050 \$ 1,179.00	CCS100050 \$ 3,630.00			
1/4" (6.0mm)	CCS060_* \$ 58.52	CCS26060 \$ 1,268.00	CCS100060 \$ 3,902.00			
3/8" (10.0mm)	CCS100_* \$ 103.70	CCS26100 \$ 2,247.00	CCS100100 \$ 6,914.00			
1/2" (12.5mm)	CCS125_* \$ 111.18	CCS26125 \$ 2,409.00	CCS100125 \$ 7,412.00			
HEXAGON BORDER						
3/16" (5.0mm)	HCS050_* \$ 54.44	HCS26050 \$ 1,179.00	HCS100050 \$ 3,630.00			
1/4" (6.0mm)	HCS060_* \$ 58.52	HCS26060 \$ 1,268.00	HCS100060 \$ 3,902.00			
3/8" (10.0mm)	HCS100_* \$ 103.70	HCS26100 \$ 2,247.00	HCS100100 \$ 6,914.00			
1/2" (12.5mm)	HCS125_* \$ 111.18	HCS26125 \$ 2,409.00	HCS100125 \$ 7,412.00			
SQUARE BORDER						
3/16" (5.0mm)	SCS050_* \$ 54.44	SCS26050 \$ 1,179.00	SCS100050 \$ 3,630.00			
1/4" (6.0mm)	SCS060_* \$ 58.52	SCS26060 \$ 1,268.00	SCS100060 \$ 3,902.00			
3/8" (10.0mm)	SCS100_* \$ 103.70	SCS26100 \$ 2,247.00	SCS100100 \$ 6,914.00			
1/2" (12.5mm)	SCS125_* \$ 111.18	SCS26125 \$ 2,409.00	SCS100125 \$ 7,412.00			
TRIANGLE BORDER						
3/16" (5.0mm)	TCS050_* \$ 54.44	TCS26050 \$ 1,179.00	TCS100050 \$ 3,630.00			
1/4" (6.0mm)	TCS060_* \$ 58.52	TCS26060 \$ 1,268.00	TCS100060 \$ 3,902.00			
3/8" (10.0mm)	TCS100_* \$ 103.70	TCS26100 \$ 2,247.00	TCS100100 \$ 6,914.00			
1/2" (12.5mm)	TCS125_* \$ 111.18	TCS26125 \$ 2,409.00	TCS100125 \$ 7,412.00			
*Specify Character: A thru Z OR 0 thru 9; - eg: TCS060_A for letter A w/triangle border & 1/4" overall border height						



**Sharp Faced**  
**"IMPERIAL SERIES"**  
**Type Kits & Loose Type**



◆USA STOCK ITEM◆

A	A	B	B	C	C	D	D	E	E	F	F	G	G	H	H	I	I	J	J	K	K	L	L	M	M	N	N	O	O	P	P	Q	Q	R	R	S	S	T	T	U	U	V	V	W	W	X	X	Y	Y	Z	Z	1	1	2	2	3	3	4	4	5	5	6	6	7	7	8	8	9	9	0	0
---	---	---	---	---	---	---	---	---	---	---	---	---	---	---	---	---	---	---	---	---	---	---	---	---	---	---	---	---	---	---	---	---	---	---	---	---	---	---	---	---	---	---	---	---	---	---	---	---	---	---	---	---	---	---	---	---	---	---	---	---	---	---	---	---	---	---	---	---	---	---	---

THERE ARE 100  
CHARACTERS PER KIT PLUS  
12 SPACERS IN 1MM  
THROUGH 3MM KITS  
& 6 SPACERS IN 4MM  
THROUGH 10 MM KITS

1.0 THROUGH 5.0 MM KITS PACKED IN PLASTIC CASES



6.0 & 10.0 MM KITS PACKED IN WOODEN BOXES

Character Height		"IMPERIAL SERIES" Blank Dimensions							
CH		BH		BW		BD			
US	Metric	US	Metric	US	Metric	US	Metric		
.040"	1.0mm	1/4"	6.40mm	1/16"	1.6mm	7/8"	22.20mm		
1/16"	1.5mm	1/4"	6.40mm	1/16"	1.6mm	7/8"	22.20mm		
5/64"	2.0mm	1/4"	6.40mm	5/64"	2.0mm	7/8"	22.20mm		
3/32"	2.5mm	1/4"	6.40mm	3/32"	2.5mm	7/8"	22.20mm		
1/8"	3.0mm	1/4"	6.40mm	1/8"	3.2mm	7/8"	22.20mm		
5/32"	4.0mm	1/4"	6.40mm	5/32"	4.0mm	7/8"	22.20mm		
3/16"	5.0mm	1/4"	6.40mm	3/16"	4.8mm	7/8"	22.20mm		
1/4"	6.0mm	3/8"	9.50mm	1/4"	6.4mm	3/4"	19.05mm		
3/8"	10.0mm	5/8"	16.00mm	3/8"	9.5mm	1"	25.40mm		

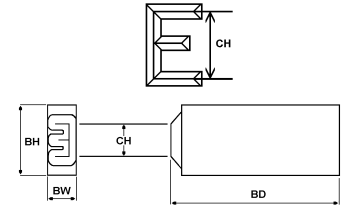
ORDER NUMBER	US SIZE	METRIC SIZE	PRICE	QTY OF TYPE THAT FITS KIT HOLDER
<b>"IMPERIAL SERIES" TYPE KITS INCLUDING HOLDER</b>				
TIFH010	.040"	1.0mm	\$ 657.10	18
TIFH015	1/16"	1.5mm	\$ 657.10	18
TIFH020	5/64"	2.0mm	\$ 670.50	15
TIFH025	3/32"	2.5mm	\$ 670.50	12
TIFH030	1/8"	3.0mm	\$ 670.50	9
TIFH040	5/32"	4.0mm	\$ 786.58	9
TIFH050	3/16"	5.0mm	\$ 786.58	8
TIFH060	1/4"	6.0mm	\$ 1,308.30	6
TIFH100	3/8"	10.0mm	\$ 1,765.14	6
<b>"IMPERIAL SERIES" TYPE KITS WITHOUT HOLDER</b>				
TIF010	.040"	1.0mm	\$ 587.30	N/A
TIF015	1/16"	1.5mm	\$ 587.30	N/A
TIF020	5/64"	2.0mm	\$ 587.30	N/A
TIF025	3/32"	2.5mm	\$ 587.30	N/A
TIF030	1/8"	3.0mm	\$ 587.30	N/A
TIF040	5/32"	4.0mm	\$ 702.56	N/A
TIF050	3/16"	5.0mm	\$ 702.56	N/A
TIF060	1/4"	6.0mm	\$ 1,057.80	N/A
TIF100	3/8"	10.0mm	\$ 1,485.30	N/A

<b>"IMPERIAL SERIES" LOOSE TYPE</b>							
CHARACTERS (EACH)		A-Z LETTER SETS (SET OF 26)		0-9 NUMBER SETS (SET OF 10)		SPACERS (EACH)	
TI010_*	\$ 7.50	TI26010	\$ 195.00	TI10010	\$ 75.00	SI010	\$ 3.96
TI015_*	\$ 7.50	TI26015	\$ 195.00	TI10015	\$ 75.00	SI015	\$ 3.96
TI020_*	\$ 7.50	TI26020	\$ 195.00	TI10020	\$ 75.00	SI020	\$ 3.96
TI025_*	\$ 7.50	TI26025	\$ 195.00	TI10025	\$ 75.00	SI025	\$ 3.96
TI030_*	\$ 7.50	TI26030	\$ 195.00	TI10030	\$ 75.00	SI030	\$ 3.96
TI040_*	\$ 8.76	TI26040	\$ 227.76	TI10040	\$ 87.60	SI040	\$ 3.96
TI050_*	\$ 8.76	TI26050	\$ 227.76	TI10050	\$ 87.60	SI050	\$ 3.96
TI060_*	\$ 12.84	TI26060	\$ 333.84	TI10060	\$ 128.40	SI060	\$ 6.82
TI100_*	\$ 18.54	TI26100	\$ 482.04	TI10100	\$ 185.40	SI100	\$ 12.00

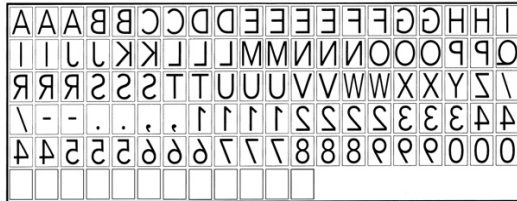
\*Specify Character: LETTERS (A thru Z), NUMBERS (0 thru 9), PUNCTUATION & / - . ,



**Sharp Faced**  
**"PRYOR SERIES"**  
**Type Kits & Loose Type**



◆USA STOCK ITEM◆



THERE ARE 100  
CHARACTERS PER KIT PLUS  
12 SPACERS IN 1MM  
THROUGH 3MM KITS  
& 6 SPACERS IN 4MM  
THROUGH 10 MM KITS

1.0 THROUGH 5.0 MM KITS PACKED IN PLASTIC CASES

Character Height		"PRYOR SERIES" Blank Dimensions							
CH		BH		BW		BD			
US	Metric	US	Metric	US	Metric	US	Metric	US	Metric
.040"	1.0mm	1/8"	3.20mm	1/16"	1.6mm	5/8"	15.87mm		
1/16"	1.5mm	1/8"	3.20mm	1/16"	1.6mm	5/8"	15.87mm		
5/64"	2.0mm	1/4"	6.40mm	5/64"	2.0mm	3/4"	19.05mm		
3/32"	2.5mm	1/4"	6.40mm	3/32"	2.5mm	3/4"	19.05mm		
1/8"	3.0mm	1/4"	6.40mm	1/8"	3.2mm	3/4"	19.05mm		
5/32"	4.0mm	5/16"	8.00mm	5/32"	4.0mm	3/4"	19.05mm		
3/16"	5.0mm	5/16"	8.00mm	3/16"	4.8mm	3/4"	19.05mm		
1/4"	6.0mm	3/8"	9.50mm	1/4"	6.4mm	3/4"	19.05mm		
3/8"	10.0mm	5/8"	16.00mm	3/8"	9.5mm	1"	25.40mm		



6.0 & 10.0 MM KITS PACKED IN WOODEN BOXES

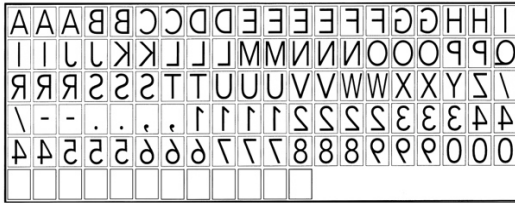
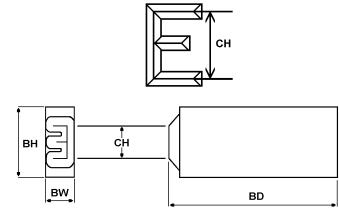
ORDER NUMBER	US SIZE	METRIC SIZE	PRICE	QTY OF TYPE THAT FITS KIT HOLDER
<b>"PRYOR SERIES" TYPE KITS INCLUDING HOLDER</b>				
TPFH010	.040"	1.0mm	\$ 689.96	12
TPFH015	1/16"	1.5mm	\$ 689.96	12
TPFH020	5/64"	2.0mm	\$ 704.04	14
TPFH025	3/32"	2.5mm	\$ 704.04	12
TPFH030	1/8"	3.0mm	\$ 704.04	9
TPFH040	5/32"	4.0mm	\$ 825.92	9
TPFH050	3/16"	5.0mm	\$ 825.92	8
TIFH060	1/4"	6.0mm	\$ 1,308.30	6
TIFH100	3/8"	10.0mm	\$ 1,765.14	6
<b>"PRYOR SERIES" TYPE KITS WITHOUT HOLDER</b>				
TPF010	.040"	1.0mm	\$ 616.68	N/A
TPF015	1/16"	1.5mm	\$ 616.68	N/A
TPF020	5/64"	2.0mm	\$ 616.68	N/A
TPF025	3/32"	2.5mm	\$ 616.68	N/A
TPF030	1/8"	3.0mm	\$ 616.68	N/A
TPF040	5/32"	4.0mm	\$ 737.70	N/A
TPF050	3/16"	5.0mm	\$ 737.70	N/A
TIF060	1/4"	6.0mm	\$ 1,057.80	N/A
TIF100	3/8"	10.0mm	\$ 1,485.30	N/A

<b>"PRYOR SERIES" LOOSE TYPE</b>							
CHARACTERS (EACH)		A-Z LETTER SETS (SET OF 26)		0-9 NUMBER SETS (SET OF 10)		SPACERS (EACH)	
TP010_*	\$ 7.88	TP26010	\$ 204.88	TP10010	\$ 78.80	SP010	\$ 4.16
TP015_*	\$ 7.88	TP26015	\$ 204.88	TP10015	\$ 78.80	SP015	\$ 4.16
TP020_*	\$ 7.88	TP26020	\$ 204.88	TP10020	\$ 78.80	SP020	\$ 4.16
TP025_*	\$ 7.88	TP26025	\$ 204.88	TP10025	\$ 78.80	SP025	\$ 4.16
TP030_*	\$ 7.88	TP26030	\$ 204.88	TP10030	\$ 78.80	SP030	\$ 4.16
TP040_*	\$ 9.20	TP26040	\$ 239.20	TP10040	\$ 92.00	SP040	\$ 4.16
TP050_*	\$ 9.20	TP26050	\$ 239.20	TP10050	\$ 92.00	SP050	\$ 4.16
TI060_*	\$ 12.84	TI26060	\$ 333.84	TI10060	\$ 128.40	SI060	\$ 6.82
TI100_*	\$ 18.54	TI26100	\$ 482.04	TI10100	\$ 185.40	SI100	\$ 12.00

*\*Specify Character: LETTERS (A thru Z), NUMBERS (0 thru 9), PUNCTUATION & / - . ,*



**Sharp Faced**  
**"EURO SERIES"**  
**Type Kits & Loose Type**



THERE ARE 100  
CHARACTERS PER KIT PLUS  
12 SPACERS IN 1MM  
THROUGH 3MM KITS  
& 6 SPACERS IN 4MM  
THROUGH 10 MM KITS

◆SPECIAL ORDER◆

Character Height		"Euro Series" Blank Dimensions					
CH		BH		BW		BD	
US	Metric	US	Metric	US	Metric	US	Metric
.040"	1.0mm	5/32"	4.00mm	1/16"	1.5mm	3/4"	19.00mm
1/16"	1.5mm	5/32"	4.00mm	1/16"	1.5mm	3/4"	19.00mm
5/64"	2.0mm	5/32"	4.00mm	5/64"	2.0mm	3/4"	19.00mm
3/32"	2.5mm	1/4"	6.00mm	3/32"	2.5mm	3/4"	19.00mm
1/8"	3.0mm	1/4"	6.00mm	1/8"	3.0mm	3/4"	19.00mm
5/32"	4.0mm	5/16"	8.00mm	5/32"	4.0mm	3/4"	19.00mm
3/16"	5.0mm	5.16"	8.00mm	3/16"	5.0mm	3/4"	19.00mm



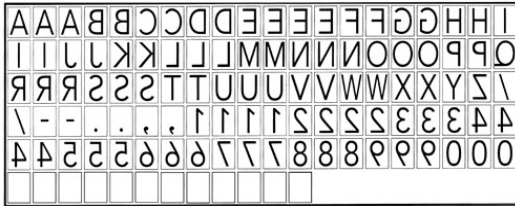
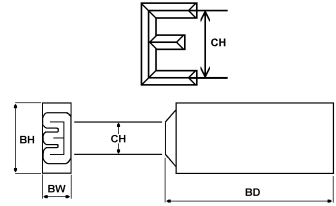
ORDER NUMBER	US SIZE	METRIC SIZE	PRICE	QTY OF TYPE THAT FITS KIT HOLDER
<b>"EURO SERIES" TYPE KITS INCLUDING HOLDER</b>				
TEFH010	.040"	1.0mm	\$ 722.81	19
TEFH015	1/16"	1.5mm	\$ 722.81	19
TEFH020	5/64"	2.0mm	\$ 737.55	14
TEFH025	3/32"	2.5mm	\$ 737.55	15
TEFH030	1/8"	3.0mm	\$ 737.55	13
TEFH040	5/32"	4.0mm	\$ 865.24	10
TEFH050	3/16"	5.0mm	\$ 865.24	8

<b>"EURO SERIES" TYPE KITS WITHOUT HOLDER</b>				
TEF010	.040"	1.0mm	\$ 646.04	
TEF015	1/16"	1.5mm	\$ 646.04	
TEF020	5/64"	2.0mm	\$ 646.04	
TEF025	3/32"	2.5mm	\$ 646.04	
TEF030	1/8"	3.0mm	\$ 646.04	
TEF040	5/32"	4.0mm	\$ 772.82	
TEF050	3/16"	5.0mm	\$ 772.82	

<b>"EURO SERIES" LOOSE TYPE</b>							
CHARACTERS (EACH)		A-Z LETTER SETS (SET OF 26)		0-9 NUMBER SETS (SET OF 10)		SPACERS (EACH)	
TE010_*	\$ 8.26	TE26010	\$ 214.76	TE10010	\$ 82.60	SE010	\$ 4.36
TE015_*	\$ 8.26	TE26015	\$ 214.76	TE10015	\$ 82.60	SE015	\$ 4.36
TE020_*	\$ 8.26	TE26020	\$ 214.76	TE10020	\$ 82.60	SE020	\$ 4.36
TE025_*	\$ 8.26	TE26025	\$ 214.76	TE10025	\$ 82.60	SE025	\$ 4.36
TE030_*	\$ 8.26	TE26030	\$ 214.76	TE10030	\$ 82.60	SE030	\$ 4.36
TE040_*	\$ 9.64	TE26040	\$ 250.64	TE10040	\$ 96.40	SE040	\$ 4.36
TE050_*	\$ 9.64	TE26050	\$ 250.64	TE10050	\$ 96.40	SE050	\$ 4.36

\*Specify Character: LETTERS (A thru Z), NUMBERS (0 thru 9), PUNCTUATION & / - . ,

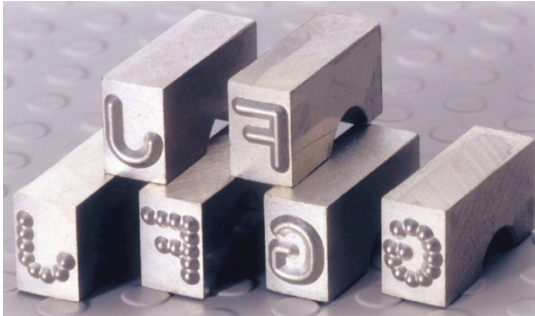
**Round & Dot Faced**  
**LOW STRESS**  
**Type Kits & Loose Type**



THERE ARE 100  
CHARACTERS PER KIT  
PLUS 6 SPACERS

Character Height		Low Stress Type Blank Dimensions					
CH		BH		BW		BD	
US	Metric	US	Metric	US	Metric	US	Metric
1/8"	3.0mm	1/4"	6.40mm	3/16"	4.80mm	7/8"	22.20mm
3/16"	5.0mm	3/8"	9.50mm	1/4"	6.40mm	3/4"	19.05mm

◆USA PARTIAL STOCK, CALL FOR INVENTORY◆



Use Pryor's 'Low Stress Types' in applications which dictate that reduced stress levels are introduced into the component being marked. The basis of 'Low Stress Type' is that the character crown is rounded to give a 'softer' impression into the component. This helps by reducing stress concentration at the bottom of the indentation VS 'Sharp Faced Type'.

ORDER NUMBER	US SIZE	METRIC SIZE	PRICE	QTY OF TYPE THAT FITS KIT HOLDER
<b>"DotStress™" DOT FACED TYPE KITS INCLUDING HOLDER</b>				
TIDSFH030	1/8"	3.0mm	\$ 1,112.76	8
TIDSFH050	3/16"	5.0mm	\$ 1,520.88	6
<b>"MiniStress™" ROUND FACE TYPE KITS INCLUDING HOLDER</b>				
TIMSFH030	1/8"	3.0mm	\$ 1,112.76	8
TIMSFH050	3/16"	5.0mm	\$ 1,520.88	6

<b>"DotStress™" DOT FACED TYPE KITS WITHOUT HOLDER</b>				
TIDSF030	1/8"	3.0mm	\$ 976.42	
TIDSF050	3/16"	5.0mm	\$ 1,186.08	
<b>"MiniStress™" ROUND FACE TYPE KITS WITHOUT HOLDER</b>				
TIMSF030	1/8"	3.0mm	\$ 976.42	
TIMSF050	3/16"	5.0mm	\$ 1,186.08	

◆USA PARTIAL STOCK, CALL FOR INVENTORY◆

<b>"DotStress™" DOT FACED LOOSE TYPE</b>							
CHARACTERS (EACH)		A-Z LETTER SETS (SET OF 26)		0-9 NUMBER SETS (SET OF 10)		SPACERS (EACH)	
TIDS030_*	\$ 14.72	TIDS26030	\$ 382.72	TIDS10030	\$ 147.20	SI050	\$ 3.96
TIDS050_*	\$ 16.20	TIDS26050	\$ 421.20	TIDS10050	\$ 162.00	SI060	\$ 6.82
*Specify Character: LETTERS (A thru Z), NUMBERS (0 thru 9), PUNCTUATION & / - . ,							
<b>"MiniStress™" ROUND FACE LOOSE TYPE</b>							
CHARACTERS (EACH)		A-Z LETTER SETS (SET OF 26)		0-9 NUMBER SETS (SET OF 10)		SPACERS (EACH)	
TIMS030_*	\$ 14.72	TIMS26030	\$ 382.72	TIMS10030	\$ 147.20	SI050	\$ 3.96
TIMS050_*	\$ 16.20	TIMS26050	\$ 421.20	TIMS10050	\$ 162.00	SI060	\$ 6.82
*Specify Character: LETTERS (A thru Z), NUMBERS (0 thru 9), PUNCTUATION & / - . ,							



❖ USA STOCK ITEM ❖ IMPERIAL & PRYOR SERIES HOLDERS  
❖ SPECIAL ORDER ❖ EURO SERIES HOLDERS

ORDER NUMBER	US SLOT LENGTH	METRIC SLOT LENGTH	PRICE	SUPPLIED STANDARD IN KIT SIZES
<b>"IMPERIAL SERIES TYPE" HAND HELD HOLDERS</b>				
H6.35-29	1-1/8"	29mm	\$ 148.86	1.0, 1.5, 2.0, 2.5, 3.0
H6.35-39	1-1/2"	39mm	\$ 155.92	4.0, 5.0
H9.6-40	1-9/16"	40mm	\$ 382.62	6.0
H16-57	2-7/32"	57mm	\$ 454.42	10.0
<b>"PRYOR SERIES TYPE" HAND HELD HOLDERS</b>				
H3.2-20	25/32"	20mm	\$ 147.52	1.0, 1.5
H6.35-29	1-1/8"	29mm	\$ 148.86	2.0, 2.5, 3.0
H8.0-39	1-1/2"	39mm	\$ 176.40	4.0, 5.0
H9.6-40	1-9/16"	40mm	\$ 382.62	6.0
H16-57	2-7/32"	57mm	\$ 454.42	10.0
<b>"LOW STRESS TYPE" HAND HELD HOLDERS</b>				
H6.35-39	1-1/2"	39mm	\$ 155.92	3.0
H9.6-40	1-9/16"	40mm	\$ 382.62	5.0
<b>"EURO SERIES TYPE" HAND HELD HOLDERS</b>				
H4-29	1-1/8"	29mm	\$ 202.44	1.0, 1.5, 2.0
H6-39	1-1/2"	39mm	\$ 202.44	2.5, 3.0
H8-40	1-9/16"	40mm	\$ 202.44	4.0, 5.0



Imperial & Pryor Series Holders



EURO Series Holders

**Hand Held**

**Safety Type Holders**

❖ USA STOCK ITEM ❖

ORDER NUMBER	US SLOT LENGTH	METRIC SLOT LENGTH	PRICE	COMPATIBLE WITH TYPE SIZES
<b>"IMPERIAL SERIES TYPE" "SAFETY" HAND HELD HOLDERS</b>				
HSH6.35-39	1-1/2"	39mm	\$ 467.82	1.0, 1.5, 2.0, 2.5, 3.0, 4.0, 5.0
HSH9.6-40	1-9/16"	40mm	\$ 820.66	6.0
<b>"PRYOR SERIES TYPE" "SAFETY" HAND HELD HOLDERS</b>				
HSH6.35-39	1-1/2"	39mm	\$ 467.82	2.0, 2.5, 3.0
HSH8.0-39	1-1/2"	39mm	\$ 499.74	4.0, 5.0
HSH9.6-40	1-9/16"	40mm	\$ 820.66	6.0



❖ USA STOCK ITEM ❖

ORDER NUMBER	OVERALL LENGTH	OVERALL HEIGHT	PRICE
<b>SAFETY STAMP GRIP compatible with most hand held type holders</b>			
GRIP0004	6-5/16"	1-7/8"	\$ 52.80



SAFETY STAMP GRIP0004 compatible with the following type holders:\*

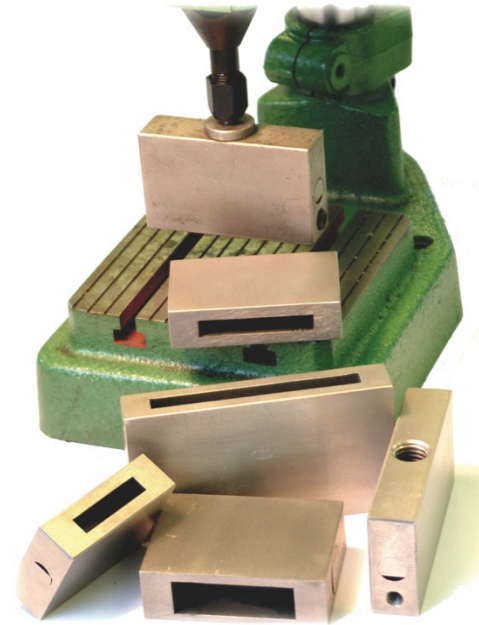
- ❖ H3.2-20, H6.35-29, H6.35-39, H8.0-39
- ❖ Compatible with all EURO Holders
- ❖ Compatible with all machine type holders & numbering heads using #HDSK090 Knurled Shank

\*Type Holders Sold Separately



◆ USA STOCK ITEM ◆ IMPERIAL & PRYOR SERIES HOLDERS  
◆ SPECIAL ORDER ◆ EURO SERIES HOLDERS

ORDER NUMBER	US SLOT LENGTH	METRIC SLOT LENGTH	PRICE	COMPATIBLE TYPE SIZES
<b>"IMPERIAL SERIES TYPE" SINGLE LINE MACHINE TYPE HOLDERS</b>				
PH6.35-29	1-1/8"	29mm	\$ 509.54	1.0mm through 5.0mm
PH6.35-39	1-1/2"	39mm	\$ 509.54	1.0mm through 5.0mm
PH6.35-60	2-5/16"	60mm	\$ 408.88	1.0mm through 5.0mm
PH6.35-70	2-3/4"	70mm	\$ 527.38	1.0mm through 5.0mm
<b>"IMPERIAL SERIES TYPE" DOUBLE LINE MACHINE TYPE HOLDER</b>				
PH12.7-39	1-1/2"	39mm	\$ 631.22	1.0mm through 5.0mm
<b>"PRYOR SERIES TYPE" SINGLE LINE MACHINE TYPE HOLDERS</b>				
PH3.2-40	1-9/16"	40mm	\$ 408.88	1.0mm, 1.5mm
PH6.35-29	1-1/8"	29mm	\$ 509.54	2.0mm, 2.5mm, 3.0mm
PH6.35-39	1-1/2"	39mm	\$ 509.54	2.0mm, 2.5mm, 3.0mm
PH6.35-60	2-5/16"	60mm	\$ 408.88	2.0mm, 2.5mm, 3.0mm
PH6.35-70	2-3/4"	70mm	\$ 527.38	2.0mm, 2.5mm, 3.0mm
<b>"PRYOR SERIES TYPE" DOUBLE LINE MACHINE TYPE HOLDER</b>				
PH12.7-39	1-1/2"	39mm	\$ 632.66	2.0mm, 2.5mm, 3.0mm
<b>"LOW STRESS TYPE" MACHINE TYPE HOLDERS</b>				
PH6.35-29	1-1/8"	29mm	\$ 509.54	3.0mm
PH6.35-39	1-1/2"	39mm	\$ 509.54	3.0mm
PH6.35-60	2-5/16"	60mm	\$ 408.88	3.0mm
PH6.35-70	2-3/4"	70mm	\$ 527.38	3.0mm
<b>"EURO SERIES TYPE" MACHINE TYPE HOLDERS</b>				
H4-29	1-1/8"	29mm	\$ 164.40	1.0mm, 1.5mm, 2.0mm
H6-39	1-1/2"	39mm	\$ 164.40	2.5mm, 3.0mm
H8-40	1-9/16"	40mm	\$ 164.40	4.0mm, 5.0mm



Shanks allow Machine Type Holders to be used with a press or by hand & hammer (#HDSK090).  
Shanks screw into back of machine type holder



◆ USA STOCK ITEM ◆

ORDER NUMBER	DIAMETER	LENGTH	PRICE	FITS PRYOR PRESS
<b>SHANKS HAVE M12 THREADED END</b>				
HMS0630	1/4", (6mm)	1.18"	\$ 89.18	114M/15
HMS0830	5/16", (8mm)	1.38"	\$ 89.18	114PB/19
HMS1040	3/8", (10mm)	1.57"	\$ 89.18	115M/20, 115PB21
HMS1650	5/8", (16mm)	2"	\$ 89.18	116M/32, 116PB/35
HMS2025	25/32", (20mm)	1"	\$ 89.18	
HMS2040	25/32", (20mm)	1.57"	\$ 89.18	
HMS25.4-38	1", (25.4mm)	1.49"	\$ 89.18	
HDSK090	25/32", (20mm)	3-7/16"	\$ 89.18	HAND HAMMER



**STAMP & TYPE**  
**Replacement**  
**Boxes**



◆USA STOCK ITEM◆

ORDER NUMBER	SET TYPE	PRICE	HAND STAMP SIZES THAT FIT
<b>REPLACEMENT HAND STAMP BOXES</b>			
CONT010	NUMBER	\$ 3.60	1.0mm, 1.5mm, 2.0mm, 2.5mm, 3.0mm ISF, PSF, RSF
CONT049	LETTER	\$ 4.56	1.0mm, 1.5mm, 2.0mm, 2.5mm, 3.0mm ISF, PSF, RSF
CONT014	NUMBER	\$ 7.20	4.0mm, 5.0mm, 6.0mm ISF, PSF, RSF; 3.0mm, 5.0mm PLS
CONT048	LETTER	\$ 9.54	4.0mm, 5.0mm, 6.0mm ISF, PSF, RSF; 3.0mm, 5.0mm PLS
CONT116	NUMBER	\$ 14.88	8.0mm, 10.0mm PSF; 6.0mm, 8.0mm PLS; 3.0mm, 5.0mm, 6.0mm, 8.0mm GSF
CONT117	LETTER	\$ 32.64	8.0mm, 10.0mm PSF; 6.0mm, 8.0mm PLS; 3.0mm, 5.0mm, 6.0mm, 8.0mm GSF
CONT118	NUMBER	\$ 14.88	12.5mm PSF; 10.0mm, 12.5mm GSF
CONT390	LETTER	\$ 32.64	12.5mm PSF
CONT119	LETTER	\$ 32.64	10.0mm, 12.5mm GSF

NOTES: Most replacement boxes are red but some may be gray in color. We will ship red when possible.

Some stamp boxes have inserts which can be moved from the damaged box to the replacement box.

CODES: ISF = Impression Sharp Faced; PSF = Premium Sharp Faced; RSF = Reversed Sharp Faced; PLS = Premium Low Stress; GSF = Goliath Sharp Faced

◆USA STOCK ITEM◆

ORDER NUMBER	PRICE	TYPE SIZES THAT FIT
<b>REPLACEMENT IMPERIAL TYPE BOXES</b>		
CONT092/GTA	\$ 37.08	BOX W/ GRILL FOR 1.0mm, 1.5mm IMPERIAL TYPE
CONT092/GTB	\$ 37.08	BOX W/GRILL FOR 2.0mm, 2.5mm IMPERIAL TYPE
CONT092/GTC	\$ 37.08	BOX W/GRILL FOR 3.0mm IMPERIAL TYPE
CONT092/GTD	\$ 37.08	BOX W/GRILL FOR 4.0mm, 5.0mm IMPERIAL TYPE
CONT019	\$ 316.44	WOODEN BOX W/GRILL FOR 6.0mm IMPERIAL TYPE

NOTES: 3.0mm Low Stress type sets use CONT092/GTD

5.0, Low Stress type sets use CONT019

# Numbering Heads MANUAL INDEXING With Small Frame



**Manual Numbering Heads** work best for repetitive numbering of items. Typical applications are noted below. For use on steel up to 40 Rockwell C, name tags, keys, food packaging, pharmaceutical packaging, cardboard boxes, and most plastic parts.

- Typical Uses:**
- ❖ Part Numbers
  - ❖ Date Codes
  - ❖ Batch Numbers
  - ❖ Production Runs
  - ❖ Non-sequential serial numbers
  - ❖ Short serial number runs with manual adjustment of numbers

Shown with optional Knurled Shank for use by hand & hammer



Can also be used in a variety of presses with use of optional press shank. See shanks below.

❖USA STOCK ITEM❖

	ORDER NUMBER	PRICE	ORDER NUMBER	PRICE	ORDER NUMBER	PRICE	ORDER NUMBER	PRICE
NUMBER OF WHEELS	1/16", (1.5mm) Character Height		5/64", (2.0mm) Character Height		3/32", (2.5mm) Character Height		1/8", (3.0mm) Character Height	
3	MNH015N03	\$ 696.62	MNH020N03	\$ 696.62	MNH025N03	\$ 696.62	MNH030N03	\$ 696.62
4	MNH015N04	\$ 844.78	MNH020N04	\$ 844.78	MNH025N04	\$ 877.40	MNH030N04	\$ 844.78
5	MNH015N05	\$ 992.94	MNH020N05	\$ 1,025.56	MNH025N05	\$ 992.94	MNH030N05	\$ 992.94
6	MNH015N06	\$ 1,124.80	MNH020N06	\$ 1,141.10	MNH025N06	\$ 1,173.72	MNH030N06	\$ 1,441.10
7	MNH015N07	\$ 1,256.64	MNH020N07	\$ 1,289.28	MNH025N07	\$ 1,257.14	MNH030N07	\$ 1,257.13
8	MNH015N08	\$ 1,437.44	MNH020N08	\$ 1,437.44	MNH025N08	\$ 1,421.12		
9	MNH015N09	\$ 1,585.60	MNH020N09	\$ 1,585.60				
10	MNH015N10	\$ 1,733.76	MNH020N10	\$ 1,717.44				
11	MNH015N11	\$ 1,865.61						
12	MNH015N12	\$ 2,030.08						
13	MNH015N13	\$ 2,161.94						
14	MNH015N14	\$ 2,294.28						

For custom wheels, pick model above and add \$288 for each 1.5mm, 2.0mm or 2.5mm & \$303 for each 3.0mm custom wheel.

Shanks allow numbering heads to be used with a press or by hand & hammer (#HDSK090). Shanks screw into back of numbering head



❖USA STOCK ITEM❖

ORDER NUMBER	DIAMETER	LENGTH	PRICE	FITS PRESS
<b>SHANKS HAVE M12 THREADED END</b>				
HMS0630	1/4", (6mm)	1-3/16"	\$ 89.18	114M, 15
HMS0830	5/16", (8mm)	1-3/16"	\$ 89.18	114PB, 19
HMS1040	3/8", (10mm)	1.57"	\$ 89.18	115M, 115PB, 20, 21
HMS1650	5/8", (16mm)	2"	\$ 89.18	116M, 116PB, 32, 35
HMS2025	25/32", (20mm)	1"	\$ 89.18	
HMS2040	25/32", (20mm)	1.57"	\$ 89.18	
HMS25.4-38	1", (25.4mm)	1.49"	\$ 89.18	
HDSK090	25/32", (20mm)	3-7/16"	\$ 89.18	HAND HAMMER

# Numbering Heads

## MANUAL INDEXING

### With Large Frame



**Manual Numbering Heads** work best for repetitive numbering of items. Typical applications are noted below. For use on steel up to 40 Rockwell C, tags, food packaging, pharmaceutical packaging, cardboard boxes, and most plastic parts.

**Typical Uses:**

- ❖ Part Numbers
- ❖ Date Codes
- ❖ Batch Numbers
- ❖ Production Runs
- ❖ Non-sequential serial numbers
- ❖ Short serial number runs with manual adjustment of numbers



◆USA PARTIAL STOCK, CALL FOR INVENTORY◆

	ORDER NUMBER	PRICE	ORDER NUMBER	PRICE	ORDER NUMBER	PRICE
<b>NUMBER OF WHEELS</b>	<b>5/32", (4.0mm) Character Height</b>		<b>3/16", (5.0mm) Character Height</b>		<b>1/4", (6.0mm) Character Height</b>	
3	MNH040N03	\$ 1,070.02	MNH050N03	\$ 1,070.02	MNH060N03	\$ 1,254.42
4	MNH040N04	\$ 1,201.38	MNH050N04	\$ 1,201.38	MNH060N04	\$ 1,535.42
5	MNH040N05	\$ 1,398.02	MNH050N05	\$ 1,463.31	MNH060N05	\$ 1,814.74
6	MNH040N06	\$ 1,594.68	MNH050N06	\$ 1,594.68	MNH060N06	\$ 2,095.74
7	MNH040N07	\$ 1,726.04	MNH050N07	\$ 1,823.98	MNH060N07	\$ 2,310.62
8	MNH040N08	\$ 1,987.98	MNH050N08	\$ 1,955.34		
9	MNH040N09	\$ 2,184.64				
10	MNH040N10	\$ 2,384.64				

For custom wheels, pick model above and add \$316 for each 4 & 5mm and \$323 for each 6mm custom wheel.

## MANUAL NUMBERING HEAD SMALL & LARGE FRAME STANDARD 0-9 REPLACEMENT WHEELS

CHARACTER HEIGHT	STANDARD 0-9 WHEEL	PRICE	CUSTOM WHEEL	PRICE
<b>MANUAL NUMBERING HEAD REPLACEMENT WHEELS STANDARD 0-9 OR CUSTOM - 11 POSITION WHEEL</b>				
1.5mm	C0777031	\$ 192.62	MNH015CW*	\$ 566.70
2.0mm	C0777032	\$ 192.62	MNH020CW*	\$ 566.70
2.5mm	C0777033	\$ 192.62	MNH025CW*	\$ 566.70
3.0mm	C0777034	\$ 192.62	MNH030CW*	\$ 585.80
4.0mm	C0777006	\$ 255.66	MNH040CW*	\$ 665.40
5.0mm	C0777007	\$ 255.66	MNH050CW*	\$ 665.40
6.0mm	C0777008	\$ 364.22	MNH060CW*	\$ 678.14



◆1.0 THROUGH 3.0mm standard wheels USA STOCK ITEM◆

◆4.0 THROUGH 6.0mm standard wheels SPECIAL ORDER◆

◆All custom wheels SPECIAL ORDER◆

\*CUSTOM WHEELS AVAILABLE WITH LETTERS AND ADDITIONAL CHARACTERS. SPECIFY CHARACTERS FOR 10 POSITIONS.

# Numbering Heads AUTO INDEXING With Small Frame



**AUTO Numbering Heads** are used for rapidly marking sequential serial numbers with a press. The lever can be pushed manually or the press can be set up for the lever to be tripped automatically after each indentation is made.

**Typical Use:**  
❖ Serial Numbers

*Typical setup is in a press with the use of optional press shank. See shanks below. Back of numbering can also be adapted to other mounting methods.*



*Auto-Indexing lever is easily and quickly adjusted manually or can be set up to be tripped automatically.*

❖USA PARTIAL STOCK, CALL FOR INVENTORY❖

	ORDER NUMBER	PRICE	ORDER NUMBER	PRICE	ORDER NUMBER	PRICE	ORDER NUMBER	PRICE
NUMBER OF WHEELS	1/16", (1.5mm) Character Height		5/64", (2.0mm) Character Height		3/32", (2.5mm) Character Height		1/8", (3.0mm) Character Height	
3	ANH015N03	\$ 2,458.78	ANH020N03	\$ 2,458.78	ANH025N03	\$ 2,458.78	ANH030N03	\$ 2,458.78
4	ANH015N04	\$ 2,605.72	ANH020N04	\$ 2,605.72	ANH025N04	\$ 2,607.72	ANH030N04	\$ 2,605.72
5	ANH015N05	\$ 2,892.26	ANH020N05	\$ 2,892.26	ANH025N05	\$ 2,892.26	ANH030N05	\$ 2,892.26
6	ANH015N06	\$ 2,556.74	ANH020N06	\$ 2,556.74	ANH025N06	\$ 2,556.74	ANH030N06	\$ 2,556.74
7	ANH015N07	\$ 3,369.80	ANH020N07	\$ 3,369.80	ANH025N07	\$ 3,369.80	ANH030N07	\$ 3,369.80
8	ANH015N08	\$ 3,712.66	ANH020N08	\$ 3,712.66	ANH025N08	\$ 3,712.66	MNH030N08	\$ 3,712.66
9	ANH015N09	\$ 3,953.42	ANH020N09	\$ 3,953.42	ANH025N09	\$ 3,953.42		
10	ANH015N10	\$ 4,194.18	ANH020N10	\$ 4,194.18				
11	ANH015N11	\$ 4,434.94						
12	ANH015N12	\$ 4,675.70						

Repair/replacement parts available for PRYOR numbering heads. Call for price and availability.

Shanks allow numbering heads to be used with a press or by hand & hammer (#HDSK090). Shanks screw into back of numbering head



❖USA STOCK ITEM❖

ORDER NUMBER	DIAMETER	LENGTH	PRICE	FITS PRYOR PRESS
<b>SHANKS HAVE M12 THREADED END</b>				
HMS0630	1/4", (6mm)	1.18"	\$ 89.18	114M, 15
HMS0830	5/16", (8mm)	1.38"	\$ 89.18	114PB, 19
HMS1040	3/8", (10mm)	1.57"	\$ 89.18	115M, 115PB, 20, 21
HMS1650	5/8", (16mm)	2"	\$ 89.18	116M, 116PB, 32, 35
HMS2025	25/32", (20mm)	1"	\$ 89.18	
HMS2040	25/32", (20mm)	1.57"	\$ 89.18	
HMS25.4-38	1", (25.4mm)	1.49"	\$ 89.18	
HDSK090	25/32", (20mm)	3-7/16"	\$ 89.18	HAND HAMMER



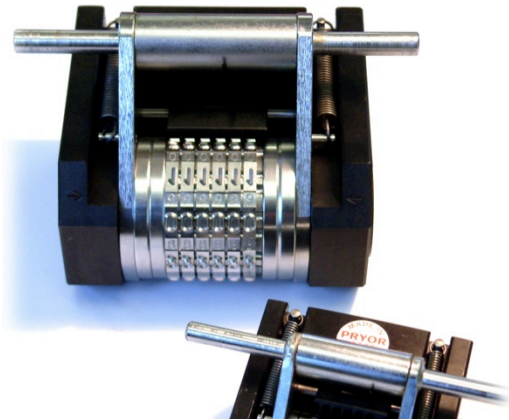
# Numbering Heads

## AUTO INDEXING

### With Large Frame



**AUTO Numbering Heads** are used for rapidly marking sequential serial numbers with a press. The lever can be pushed manually or the press can be set up for the lever to be tripped automatically after each indentation is made.



**Typical Uses:**

- ❖ Serial Numbers

**NOTE:** A maximum of six wheels can have fully automatic action

❖ **SPECIAL ORDER** ❖

	ORDER NUMBER	PRICE	ORDER NUMBER	PRICE	ORDER NUMBER	PRICE
<b>NUMBER OF WHEELS</b>	<b>5/32", (4.0mm) Character Height</b>		<b>3/16", (5.0mm) Character Height</b>		<b>1/4", (6.0mm) Character Height</b>	
3	ANH040N03	\$ 3,536.34	ANH050N03	\$ 3,536.34	ANH060N03	\$ 3,928.18
4	ANH040N04	\$ 3,886.54	ANH050N04	\$ 3,886.54	ANH060N04	\$ 4,234.30
5	ANH040N05	\$ 4,177.96	ANH050N05	\$ 4,177.96	ANH060N05	\$ 4,537.96
6	ANH040N06	\$ 3,756.74	ANH050N06	\$ 3,756.74	ANH060N06	\$ 4,114.30
7	ANH040N07	\$ 4,657.96	ANH050N07	\$ 4,657.96	ANH060N07	\$ 5,010.62
8	ANH040N08	\$ 5,054.70	ANH050N08	\$ 5,054.70	ANH060N08	\$ 5,412.26
9	ANH040N09	\$ 5,328.50	ANH050N09	\$ 5,328.50		
10	ANH040N10	\$ 5,602.30				
11	ANH040N11	\$ 5,876.10				

Repair/replacement parts available for PRYOR numbering heads. Call for price and availability.

## AUTOMATIC NUMBERING HEAD SMALL & LARGE FRAME STANDARD 0-9 REPLACEMENT WHEELS

CHARACTER HEIGHT	ORDER NO DIGIT WHEEL	DIGIT WHEEL PRICE	ORDER NO TENS WHEEL	TENS WHEEL PRICE	ORDER NO CUSTOMS WHEELS	CUSTOM WHEEL PRICE
<b>MANUAL NUMBERING HEAD REPLACEMENT WHEELS WITH STANDARD 0-9 ENGRAVING - 10 POSITION WHEEL</b>						
1.5mm	C0672034	\$ 245.28	C0672044	\$ 245.28	TBD	\$ 517.44
2.0mm	C0672032	\$ 245.28	C0672042	\$ 245.28	TBD	\$ 517.44
2.5mm	C0672030	\$ 245.28	C0672030	\$ 245.28	TBD	\$ 517.44
3.0mm	C0672029	\$ 245.28	C0672039	\$ 245.28	TBD	\$ 517.44
4.0mm	C0672147	\$ 258.72	C0672154	\$ 258.72	TBD	\$ 537.60
5.0mm	C0672145	\$ 258.72	C0672152	\$ 258.72	TBD	\$ 537.60
6.0mm	C0672143	\$ 258.72	C0672150	\$ 288.96	TBD	\$ 557.76

❖ 1.0 THROUGH 3.0mm wheels SPECIAL ORDER ❖

❖ 4.0 THROUGH 6.0mm wheels SPECIAL ORDER ❖

CUSTOM WHEELS AVAILABLE WITH LETTERS AND ADDITIONAL CHARACTERS

## Hand Operated BENCH MOUNT Impact Press



**Model 15 Press**, 500kg (.55 TON) press is generally used for marking aluminum name plates, keys and other soft metals. Contact us if you have questions about compatible type sizes and number of characters which can be marked.



**Model 20 Press** is our most popular press with a 3000kg (3.3 TON) maximum impact force. This press can mark metals up to 40 HRC. Contact us if you have questions about compatible type sizes and number of characters which can be marked.



**Model 32 Press** is our most robust hand operated press and is ideal for jobs requiring deep marks, marking hard materials or marking long strings of characters at one time. The unit has a maximum 6500kg (7.15 TON) impact force. Contact us if you have questions about compatible type sizes and number of characters which can be marked.

ORDER NUMBER	PRICE
Model 15	\$ 1,582.00

◆USA STOCK ITEM◆

ORDER NUMBER	PRICE
Model 20	\$ 2,016.00

◆USA STOCK ITEM◆

ORDER NUMBER	PRICE
Model 32	\$ 4,762.00

◆USA STOCK ITEM◆

GUIDE* for Maximum Character Quantity using SHARP-FACED Type with aluminum and mild steel			
Aluminum, Rockwell Hardness ± 60B			
Type Size	Model 15	Model 20	Model 32
1.5mm (1/16")	10	48	96
2.0mm (5/64")	7	36	72
2.5mm (3/32")	6	28	57
3.0mm (1/8")	5	24	48
4.0mm (5/32")	4	18	35
5.0mm (3/16")	3	14	29
Mild Steel, Rockwell Hardness ± 24C			
Type Size	Model 15	Model 20	Model 32
1.5mm (1/16")	5	12	24
2.0mm (5/64")	4	9	18
2.5mm (3/32")	3	7	14
3.0mm (1/8")	2	6	12
4.0mm (5/32")	1	5	8
5.0mm (3/16")	-	3	6

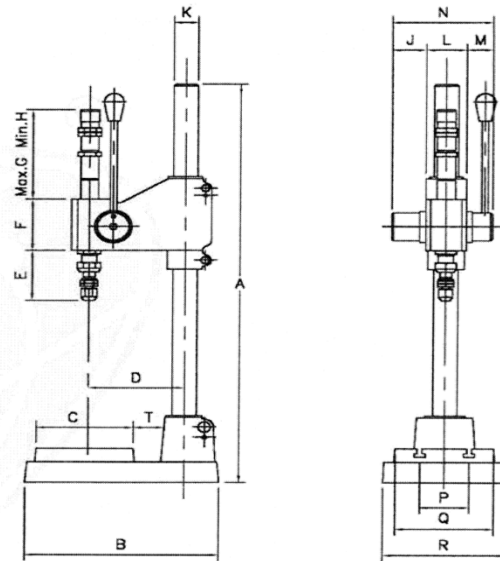
\*Only a "GUIDE". Surface treatment/finish, depth required, marking head mass & spring loading are variables that will affect results.

Dimensions (mm)

MODEL	A	B	C	D	E	F	G	H	K	J	L	M	N	P	Q	R	T
15	450	210	100	112	50	59	130	110	30	29	48	32	109	50	100	132	38
20	650	309	160	160	110	102	180	160	42	57.5	66	42.5	166	80	160	205	45
32	850	443	220	230	150	180	360	325	70	66.5	106	61.5	234	120	220	280	70

Specifications, above or below, may change or be changed without notice.

	Model 15	Model 20	Model 32
Shipping Weight, ±5%	26 LBS	69 LBS	290 LBS
Impact Range	0-500 kg	0-3000 kg	0-6500 kg
Shank Dia. Required	6mm	10mm	16mm
Maximum Clearance	260mm	330mm	370mm





**Model 19 Press**, 600kg (.66 TON) press is generally used for marking aluminum name plates, keys and other soft metals. Contact us if you have questions about compatible type sizes and number of characters which can be marked.

ORDER NUMBER	PRICE
Model 19	\$ 2,263.00

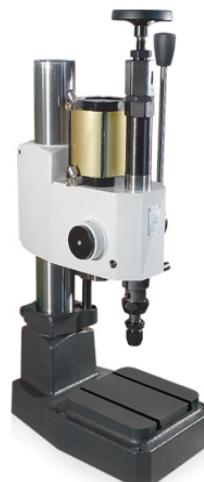
◆USA STOCK ITEM◆



**Model 21 Press** is our most popular size press with a 3500kg (3.85 TON) maximum impact force. This press can mark metals up to 40 HRC. Contact us if you have questions about compatible type sizes and number of characters which can be marked.

ORDER NUMBER	PRICE
Model 21	\$ 3,792.00

◆USA STOCK ITEM◆



**Model 35 Press** is our most robust pneumatic operated press and is ideal for jobs requiring deep marks, marking hard materials or marking long strings of characters at one time. The unit has a maximum 7500kg (8.25 TON) impact force. Contact us if you have questions about compatible type sizes and number of characters which can be marked.

ORDER NUMBER	PRICE
Model 35	\$ 6,707.00

◆USA STOCK ITEM◆

GUIDE* for Maximum Character Quantity using SHARP-FACED Type with aluminum and mild steel			
Aluminum, Rockwell Hardness ± 60B			
Type Size	Model 19	Model 21	Model 35
1.5mm (1/16")	10	48	96
2.0mm (5/64")	7	36	72
2.5mm (3/32")	6	28	57
3.0mm (1/8")	5	24	48
4.0mm (5/32")	4	18	35
5.0mm (3/16")	3	14	29
Mild Steel, Rockwell Hardness ± 24C			
Type Size	Model 19	Model 21	Model 35
1.5mm (1/16")	5	12	24
2.0mm (5/64")	4	9	18
2.5mm (3/32")	3	7	14
3.0mm (1/8")	2	6	12
4.0mm (5/32")	1	5	8
5.0mm (3/16")	-	3	6

\*Only a "GUIDE". Surface treatment/finish, depth required, marking head mass & spring loading are variables that will affect results.

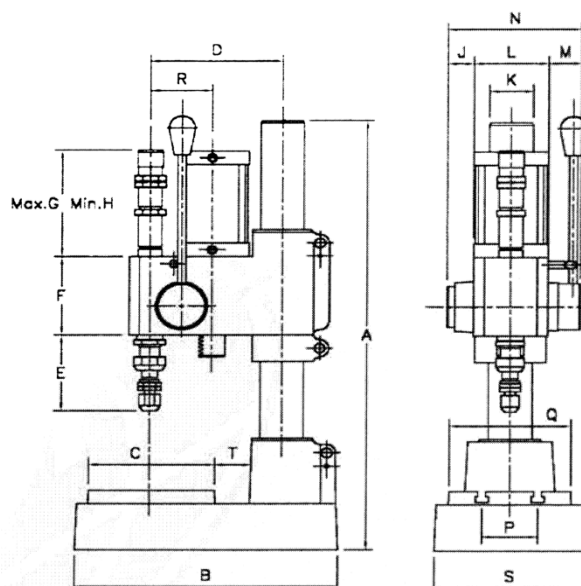
Dimensions (mm)

MODEL	A	B	C	D	E	F	G	H	K	J	L	M	N	P	Q	S	T
19	350	225	110	112	45	65	120	100	36	20.5	56	34	110.5	50	110	138	27
21	630	355	176	180	120	118	160	110	60	37	102	44	183	80	168	208	50
35	800	505	240	260	160	182	340	300	100	44	170	56.5	270.5	120	240	300	72

Specifications, above or below, may change or be changed without notice.

	Model 19*	Model 21*	Model 35**
Shipping Weight, ±5%	36 LBS	164 LBS	399 LBS
Impact Range	0-600 kg	0-3500 kg	0-7500 kg
Shank Dia. Required	8mm	10mm	16mm
Maximum Clearance	175mm	270mm	300mm

\*Includes Foot Pedal shipped separately. \*\*Foot pedal available as option.



116PB FOOT PEDAL	
ORDER NUMBER	PRICE
32DAFP	\$ 192.86

◆USA STOCK ITEM◆



**MarkPRO Machine Stands** are extremely stable, high capacity and come with your choice of Hardboard or Laminate tops. Available in many sizes including hard to find 24" depth tops. Ideal for machine stands, work tables and packing tables.

- ❖ Choice of tempered hardboard or laminate tops
- ❖ Powder coated 4-post legs with 6 cross braces per top offer an extremely stable work surface
- ❖ The 4 side cross braces are welded in place and the front & back cross braces can be bolted into optimum position for access under table by worker
- ❖ Legs can be fastened to floor for additional stability
- ❖ Hardboard tops are 1-5/8" thick; laminate tops are 1-1/2" thick
- ❖ Legs are adjustable by means of 4 HD bolts so top height can be 30" to 34" above floor
- ❖ Optional steel accessory drawers available
- ❖ Optional 1" thick, 12" deep, undershelf available
- ❖ CUSTOM SIZED DEPTHS, LENGTHS & HEIGHTS ARE AVAILABLE
- ❖ Ships KD - Assembly required

❖ PRODUCED TO ORDER; 4-5 DAY LEAD TIME TO SHIP ❖

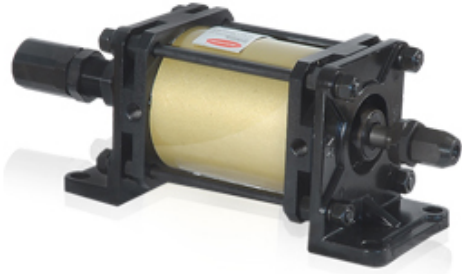
ORDER NUMBER	TOP SURFACE MATERIAL	TOP DIMENSION	PRICE
<b>MACHINE STANDS W/24" DEEP TOPS</b>			
MS2424HT	HARDBOARD	24" X 24"	\$ 357.52
MS2424LT	LAMINATE	24" X 24"	\$ 375.38
MS2436HT	HARDBOARD	24" X 36"	\$ 410.30
MS2436LT	LAMINATE	24" X 36"	\$ 430.82
MS2442HT	HARDBOARD	24" X 42"	\$ 440.82
MS2442LT	LAMINATE	24" X 42"	\$ 462.86
MS2448HT	HARDBOARD	24" X 48"	\$ 449.26
MS2448LT	LAMINATE	24" X 48"	\$ 476.72
<b>MACHINE STANDS W/30" DEEP TOPS</b>			
MS3036HT	HARDBOARD	30" X 36"	\$ 466.78
MS3036LT	LAMINATE	30" X 36"	\$ 490.12
MS3042HT	HARDBOARD	30" X 42"	\$ 507.20
MS3042LT	LAMINATE	30" X 42"	\$ 532.56
MS3048HT	HARDBOARD	30" X 48"	\$ 547.02
MS3048LT	LAMINATE	30" X 48"	\$ 574.36

ORDER NUMBER	DRAWER INSIDE DIMENSION	PRICE
<b>OPTIONAL DRAWER</b>		
MS2DWR	5.5" X 13.25" X 3"D	\$ 16.08
<b>NUMBER OF DRAWERS THAT CAN BE INSTALLED UNDER DIFFERENT WIDTH TOPS</b>		

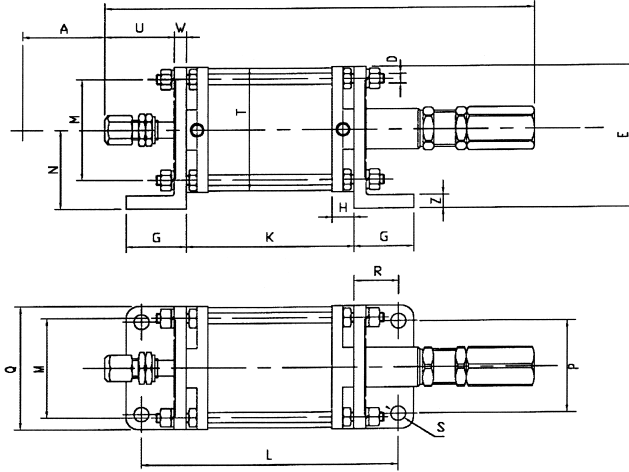
TOP WIDTH	NUMBER OF DRAWERS
24"	2
36"	4
42"	5
48"	6

ORDER NUMBER	UNDER SHELF SURFACE MATERIAL	SHELF DIMENSION	PRICE
<b>OPTIONAL 1" THICK UNDER-SHELF</b>			
MS24USHT	HARDBOARD	12" X 24"	\$ 39.06
MS24USLT	LAMINATE	12" X 24"	\$ 55.90
MS36USHT	HARDBOARD	12" X 36"	\$ 58.50
MS36USLT	LAMINATE	12" X 36"	\$ 83.92
MS42USHT	HARDBOARD	12" X 42"	\$ 66.76
MS42USLT	LAMINATE	12" X 42"	\$ 96.32
MS48USHT	HARDBOARD	12" X 48"	\$ 78.10
MS48USLT	LAMINATE	12" X 48"	\$ 111.78





Pneumatically Powered Percussion Press modules suitable for fitting into automated production lines and machines.



◆USA STOCK ITEM◆

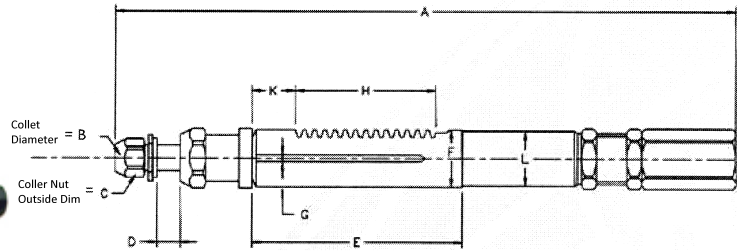
ORDER NUMBER	PRICE
MB19V	\$ 2,373.00
MB21V	\$ 4,049.00
MB35V	\$ 6,689.00

Dimensions (mm)

MODEL	A	C	D	E	G	H	K	L	M	N	P	Q	S	T	U	W	Z
MB19V	24	235	M8	78	45	14	88	158	50	45	45	65	11	60	36	10	10
MB21V	49	395	M10	130	55	20	153	238	90	72.5	90	115	14	105	64	12	12
MB35V	85	670	M16	217	87	32	234	364	140	125	140	184	17	170	108	27.5	24

Specifications may change or be changed without notice.

## INTEGRATOR Press Energy Modules



MODEL	A	B	C	D	E	F	G	H	K	J	L
EM15/19	240	6-8	13-17	8	80	25	3	51	16	1.25	24
EM20/21	392	10	24	17	137	36	6	94.2	21	2	34
EM32/35	690	16	36	22	224	60	7	131.9	61	2	58

Specifications may change or be changed without notice.

◆USA STOCK ITEM◆

ORDER NUMBER	PRICE
EM15	\$ 790.00
EM19	\$ 790.00
EM20/21	\$ 1,282.00
EM32/35	\$ 2,758.00

# PRESS & INTEGRATOR

## MarkPRO Repair/Replacement Parts



### 114 Series, models 15 & 19 presses

◆USA STOCK ITEM◆

Schematic #	Order #	Press Code	Description	PRICE
2	114ITM02	M / P	LOWER SLEEVE	\$ 315.64
3	114ITM03	M / P	SLEEVE RETURN SPRING / AKA BOTTOM SPRING	\$ 5.90
4	114ITM04	M / P	BEARING SLEEVE	\$ 97.16
5	114ITM05	M / P	TUBE GUIDE	\$ 234.00
6	114ITM06	M / P	STEEL BALLS, SET OF 6	\$ 7.20
7	114ITM07	M / P	GUIDE RETURN SPRING	\$ 5.90
9	114ITM09	M/P	HAMMER	\$ 147.60
10	114ITM10-2.2	M / P	IMPACT SPRING W/2.2MM DIA WIRE	\$ 15.36
10	114ITM10-2.6	M / P	IMPACT SPRING W/2.6MM DIA WIRE	\$ 20.30
12	114ITM12	M / P	IMPACT ADJUSTING NUT	\$ 94.28
19	114ITM19	M	RAM ANVIL 6MM FITS MANUAL PRESS ONLY	\$ 163.12
19	114PIT19	P	RAM ANVIL 8MM PNEUMATIC PRESS ONLY	\$ 222.64
20	114ITM20	M / P	SMALL ANVIL KEY	\$ 12.50
21	114ITM21	M	ANVIL RETAINING NUT 6MM MANUAL PRESS ONLY	\$ 115.06
21	114PIT21	P	ANVIL RETAINING NUT 8MM MANUAL PRESS ONLY	\$ 115.06
23	114ITM23	M	COLLET NUT 6MM COLLET FITS MANUAL PRESS ONLY	\$ 24.36
23	114PIT23	P	COLLET NUT 8MM COLLET FITS PNEUMATIC PRESS ONLY	\$ 32.54
30	114ITM30	M / P	DRIVE PIN	\$ 2.36
32	114ITM32	M*	HANDLE SPRING / AKA LEVER SPRING	\$ 22.46

### 115 Series, models 20 & 21 presses

◆USA STOCK ITEM◆

Schematic #	Order #	Press Code	Description	PRICE
2	115ITM02	M / P	LOWER SLEEVE	\$ 914.32
3	115ITM03	M / P	SLEEVE RETURN SPRING / AKA BOTTOM SPRING	\$ 13.70
4	115ITM04	M / P	BEARING SLEEVE	\$ 100.00
5	115ITM05	M / P	TUBE GUIDE	\$ 298.80
6	115ITM06	M / P	STEEL BALLS, SET OF 6	\$ 7.20
7	115ITM07	M / P	GUIDE RETURN SPRING	\$ 19.36
10	115ITM10-2.5	M / P	IMPACT SPRING W/2.5MM DIA WIRE	\$ 25.76
10	115ITM10-3.2	M / P	IMPACT SPRING W/3.2MM DIA WIRE	\$ 35.20
10	115ITM10-3.5	M / P	IMPACT SPRING W/3.5MM DIA WIRE	\$ 43.26
10	115ITM10-3.8	M / P	IMPACT SPRING W/3.8MM DIA WIRE	\$ 44.20
12	115ITM12	M / P	IMPACT ADJUSTING NUT	\$ 139.28
19	115ITM19	M / P	RAM ANVIL	\$ 338.28
20	115ITM20	M / P	SMALL ANVIL KEY	\$ 16.56
21	115ITM21	M / P	ANVIL RETAINING NUT	\$ 44.20
22	115ITM22	M / P	COLLET	\$ 174.86
23	115ITM23	M / P	COLLET NUT	\$ 51.20
30	115ITM30	M / P	DRIVE PIN	\$ 3.96
32	115ITM32	M*	HANDLE SPRING / AKA LEVER SPRING	\$ 50.10
64	115ITM64	M / P	IMPACT STOP LOCK NUT	\$ 36.86
65	115ITM65	M / P	IMPACT RUBBER ABSORBER	\$ 18.46
75	115ITM75	M / P	IMPACT STOP NUT	\$ 45.10

### 116 Series, models 32 & 35 presses

◆USA STOCK ITEM◆

Schematic #	Order #	Press Code	Description	PRICE
2	116ITM02	M / P	LOWER SLEEVE	\$ 1,566.64
3	116ITM03	M / P	SLEEVE RETURN SPRING / AKA BOTTOM SPRING	\$ 29.30
5	116ITM05	M / P	TUBE GUIDE	\$ 469.84
6	116ITM06	M / P	STEEL BALLS, SET OF 6	\$ 14.10
7	116ITM07	M / P	GUIDE RETURN SPRING	\$ 33.80
10	116ITM10-7.5	M / P	IMPACT SPRING W/7.5MM DIA WIRE	\$ 171.05
22	116ITM22	M / P	COLLET	\$ 178.22
23	116ITM23	M / P	COLLET NUT	\$ 69.06
30	116ITM30	M / P	DRIVE PIN	\$ 8.74
32	116ITM32	M*	HANDLE SPRING / AKA LEVER SPRING	\$ 88.35
64	116ITM64	M / P	IMPACT STOP LOCK NUT	\$ 28.80
65	116ITM65	M / P	IMPACT RUBBER ABSORBER	\$ 34.75
75	116ITM75	M / P	IMPACT STOP NUT	\$ 30.70

ADDITIONAL PARTS AVAILABLE BY SPECIAL ORDER

PRESS CODE: M = MANUAL PRESS COMPATIBLE P= PNEUMATIC PRESS COMPATIBLE

\* FOR SAFETY, HANDLE SPRING (LEVER SPRING) ONLY INTENDED FOR USE IN MANUAL PRESSES. DO NOT USE IN PNEUMATIC PRESSES.

# MarkPRO

BRAND

## PERMANENT PAINT MARKERS



◆USA STOCK ITEM◆

### MULTI-PURPOSE

PAINT MARKERS - 81 SERIES BRILLIANT LONG LASTING PAINT - "Our best selling marker"	ORDER NUMBER	COLOR	PACK QTY PER COLOR	PRICE			
				1 ea	6 ea	72 ea	144 ea
❖ Valve operated paint-fed tip with highly leak resistant design	81011	BLACK	6	\$ 5.38	\$ 3.84	\$ 3.20	\$ 2.56
❖ Std 2.3mm tip offers med width mark & is highly wear resistant	81131	WHITE	6	\$ 5.38	\$ 3.84	\$ 3.20	\$ 2.56
❖ Also available with 4.0mm wide chisel tip or 1.5mm fine tip	81141	YELLOW	6	\$ 5.38	\$ 3.84	\$ 3.20	\$ 2.56
❖ Paint formulation resists drying out tip	81111	RED	6	\$ 5.38	\$ 3.84	\$ 3.20	\$ 2.56
❖ Quick dry paint - average dry time 15 to 35 seconds	81021	BLUE	6	\$ 5.38	\$ 3.84	\$ 3.20	\$ 2.56
❖ Permanent waterproof colors are fade & abrasion resistant	81051	GREEN	6	\$ 5.38	\$ 3.84	\$ 3.20	\$ 2.56
❖ Rugged aluminum barrel for commercial & industrial use	81031	BROWN	6	\$ 5.38	\$ 3.84	\$ 3.20	\$ 2.56
❖ Marks on most dry and many damp and oily surfaces	81081	ORANGE	6	\$ 5.38	\$ 3.84	\$ 3.20	\$ 2.56
❖ Oil based opaque paint	81061	LT BLUE	6	\$ 5.38	\$ 3.84	\$ 3.20	\$ 2.56
❖ 9/16" diameter barrel with 10ML fill	81071	LT GREEN	6	\$ 5.38	\$ 3.84	\$ 3.20	\$ 2.56
❖ Carton quantity is 144 markers	81091	PURPLE	6	\$ 5.38	\$ 3.84	\$ 3.20	\$ 2.56
❖ Conforms to ASTM 4236	81101	PINK	6	\$ 5.38	\$ 3.84	\$ 3.20	\$ 2.56
	81041	GOLD	6	\$ 5.38	\$ 3.84	\$ 3.20	\$ 2.56
	81121	SILVER	6	\$ 5.38	\$ 3.84	\$ 3.20	\$ 2.56
PAINT MARKERS - 85 SERIES XYLENE FREE FORMULA - CA Proposition 65 compliant	ORDER NUMBER	COLOR	PACK QTY PER COLOR	PRICE			
❖ Xylene & HAPS free paint	85016	BLACK	6	\$ 5.38	\$ 3.84	\$ 3.20	\$ 2.56
❖ Valve operated paint-fed tip with highly leak resistant design	85136	WHITE	6	\$ 5.38	\$ 3.84	\$ 3.20	\$ 2.56
❖ 2.0mm tip offers med width mark & is highly wear resistant	85146	YELLOW	6	\$ 5.38	\$ 3.84	\$ 3.20	\$ 2.56
❖ Quick dry paint - average dry time 10 to 25 seconds	85116	RED	6	\$ 5.38	\$ 3.84	\$ 3.20	\$ 2.56
❖ Permanent waterproof colors are fade & abrasion resistant	85026	BLUE	6	\$ 5.38	\$ 3.84	\$ 3.20	\$ 2.56
❖ Rugged aluminum barrel for commercial & industrial use	85056	GREEN	6	\$ 5.38	\$ 3.84	\$ 3.20	\$ 2.56
❖ Marks on most dry surfaces	85036	BROWN	6	\$ 5.38	\$ 3.84	\$ 3.20	\$ 2.56
❖ Alcohol based opaque paint	85086	ORANGE	6	\$ 5.38	\$ 3.84	\$ 3.20	\$ 2.56
❖ 9/16" diameter barrel with 10ML fill	85106	PINK	6	\$ 5.38	\$ 3.84	\$ 3.20	\$ 2.56
❖ Conforms to ASTM 4236	85126	SILVER	6	\$ 5.38	\$ 3.84	\$ 3.20	\$ 2.56
PAINT MARKERS - 80 SERIES FINE LINE MARKING WITH RUGGED NYLON TIP	ORDER NUMBER	COLOR	PACK QTY PER COLOR	PRICE			
❖ Valve operated paint-fed tip with highly leak resistant design	80010	BLACK	12	\$ 5.96	\$ 4.26	\$ 3.55	\$ 2.84
❖ 1.2mm fine line rugged nylon tip which is resistant to drying out	80130	WHITE	12	\$ 5.96	\$ 4.26	\$ 3.55	\$ 2.84
❖ Quick dry paint - average dry time 10 to 35 seconds	80140	YELLOW	12	\$ 5.96	\$ 4.26	\$ 3.55	\$ 2.84
❖ Permanent waterproof colors are fade & abrasion resistant	80110	RED	12	\$ 5.96	\$ 4.26	\$ 3.55	\$ 2.84
❖ Rugged aluminum barrel for commercial & industrial use	80020	BLUE	12	\$ 5.96	\$ 4.26	\$ 3.55	\$ 2.84
❖ Marks on most dry and many damp and oily surfaces	80050	GREEN	12	\$ 5.96	\$ 4.26	\$ 3.55	\$ 2.84
❖ Oil based opaque paint	80080	ORANGE	12	\$ 5.96	\$ 4.26	\$ 3.55	\$ 2.84
❖ 7/16" diameter barrel with 4ML fill	80040	GOLD	12	\$ 5.96	\$ 4.26	\$ 3.55	\$ 2.84
❖ Conform to ASTM 4236	80128	SILVER	12	\$ 5.96	\$ 4.26	\$ 3.55	\$ 2.84



# MarkPRO

100 Market St, Kenilworth, NJ 07033  
 TEL: 908-298-8600 FAX: 908-298-8620  
 USA Website: www.markproonline.com

PAGE 27  
 V021515

# MarkPRO

BRAND

## Removable MARKERS

### Ink MARKERS

### Hi Purity MARKERS



◆USA STOCK ITEM◆

DETERGENT REMOVABLE MARKERS - 91 SERIES REMOVABLE MARK WITHOUT GHOSTING	ORDER NUMBER	COLOR	PACK QTY PER COLOR	PRICE			
				1 ea	6 ea	72 ea	144 ea
<ul style="list-style-type: none"> <li>Valve operated 2.3mm tip with highly leak resistant design</li> <li>No ghosting when removed with pH 10 or above detergent</li> <li>Rugged aluminum barrel for commercial &amp; industrial use</li> <li>For use on most non-porus surfaces; do not use on painted metal</li> <li>9/16" diameter barrel with 10ML fill</li> <li>TEST SURFACE BEFORE USE TO ASSURE SATISFACTORY RESULTS</li> </ul>	91011	BLACK	6	\$ 6.72	\$ 4.80	\$ 4.00	\$ 3.20
	91131	WHITE	6	\$ 6.72	\$ 4.80	\$ 4.00	\$ 3.20
	91141	YELLOW	6	\$ 6.72	\$ 4.80	\$ 4.00	\$ 3.20
	91111	RED	6	\$ 6.72	\$ 4.80	\$ 4.00	\$ 3.20
	91021	BLUE	6	\$ 6.72	\$ 4.80	\$ 4.00	\$ 3.20
	91051	GREEN	6	\$ 6.72	\$ 4.80	\$ 4.00	\$ 3.20
WATER REMOVABLE MARKERS - 94 SERIES REMOVABLE MARK WITHOUT GHOSTING	ORDER NUMBER	COLOR	PACK QTY PER COLOR	PRICE			
<ul style="list-style-type: none"> <li>Valve operated 2.3mm tip with highly leak resistant design</li> <li>No ghosting when removed w/water prior to painting or coating</li> <li>Rugged aluminum barrel for commercial &amp; industrial use</li> <li>For use on most non-porus surfaces; do not use on painted metal</li> <li>9/16" diameter barrel with 10ML fill</li> <li>TEST SURFACE BEFORE USE TO ASSURE SATISFACTORY RESULTS</li> </ul>	94011	BLACK	6	\$ 6.72	\$ 4.80	\$ 4.00	\$ 3.20
	94131	WHITE	6	\$ 6.72	\$ 4.80	\$ 4.00	\$ 3.20
	94141	YELLOW	6	\$ 6.72	\$ 4.80	\$ 4.00	\$ 3.20
	94111	RED	6	\$ 6.72	\$ 4.80	\$ 4.00	\$ 3.20
	94021	BLUE	6	\$ 6.72	\$ 4.80	\$ 4.00	\$ 3.20
	94051	GREEN	6	\$ 6.72	\$ 4.80	\$ 4.00	\$ 3.20
INDUSTRIAL INK MARKERS - 62 SERIES PERMANENT INK MARKERS OUTLAST FELT MARKERS 4-5 TIMES	ORDER NUMBER	COLOR	PACK QTY PER COLOR	PRICE			
<ul style="list-style-type: none"> <li>Patented no drip valve with DUAL Bullet/Chisel tip</li> <li>Cone tip available for finer marking</li> <li>Permanent dye ink is waterproof &amp; fade resistant</li> <li>5/8" diameter barrel with 13ML fill</li> <li>Xylene free alcohol based ink is CA Proposition 65 compliant</li> </ul>	62014	BLACK	12	\$ 5.16	\$ 3.68	\$ 3.06	\$ 2.44
	62024	BLUE	12	\$ 5.16	\$ 3.68	\$ 3.06	\$ 2.44
	62114	RED	12	\$ 5.16	\$ 3.68	\$ 3.06	\$ 2.44
	62054	GREEN	12	\$ 5.16	\$ 3.68	\$ 3.06	\$ 2.44
HI PURITY MARKERS - 52 SERIES FOR STAINLESS STEEL & NUCLEAR GRADE REQUIREMENTS	ORDER NUMBER	COLOR	PACK QTY PER COLOR	PRICE			
<ul style="list-style-type: none"> <li>HIGH PURITY INKS for marking nuclear pipes &amp; vessels. Also suitable for welding operations, auto plants &amp; aircraft industries.</li> <li>Ink certified by outside laboratory to meet US Energy Research Standard F-7-3T, GE-SPEC D50YP12</li> <li>Black ink is CA Proposition 65 compliant</li> </ul>	52014	BLACK	12	\$10.92	\$ 7.80	\$ 6.50	\$ 5.20
	52144	YELLOW	12	\$10.92	\$ 7.80	\$ 6.50	\$ 5.20
				<ul style="list-style-type: none"> <li>Patented no drip valve with DUAL Bullet/Chisel tip; fine line "Cone" tip available</li> <li>5/8" diameter barrel with 13ML fill</li> </ul>			
REPLACEMENT TIPS	ORDER NUMBER	FOR USE WITH MARKER SERIES	PACK QTY PER COLOR	PRICE			
1.2MM FINELINE TIP (For a more precise mark)	10000	80	6	\$ 0.90	\$ 0.60	\$ 0.60	\$ 0.60
2.3MM BULLET TIP (For medium width mark)	10001	81, 91, 94	6	\$ 0.90	\$ 0.60	\$ 0.60	\$ 0.60
4.0MM CHISEL TIP (For broad width mark)	10002	81, 91, 94	6	\$ 0.90	\$ 0.60	\$ 0.60	\$ 0.60
1.5MM Step-Down Tip (For a finer mark)	10003	81, 91, 94	6	\$ 0.90	\$ 0.60	\$ 0.60	\$ 0.60
2.3MM/4.0MM DUAL BULLET-CHISEL TIP (Choice of marks in 1 tip)	10004	52, 62	6	\$ 0.90	\$ 0.60	\$ 0.60	\$ 0.60
1.6mm CONE TIP (For a finer mark)	10005	52, 62	6	\$ 0.90	\$ 0.60	\$ 0.60	\$ 0.60







## INDEX

<b>HAND STAMPS</b>	<b>3-10</b>
Code Stamps	10
Cyrillic Hand Stamps	10
Goliath Heavy Duty Hand Stamps	5
Impression Grade Hand Stamps	4
Low Stress Hand Stamps	6
Made In USA Hand Stamps	10
Premium Grade Hand Stamps	3
Replacement Hand Stamp Boxes	17
Reverse Character Hand Stamps	7
Safety Grips for Hand Stamps	7
Symbol Hand Stamps	9
<b>MACHINE STANDS</b>	<b>24</b>
<b>MARKERS (PAINT &amp; INK)</b>	<b>27-28</b>
Detergent Removable Markers	28
Hi Purity Markers	28
Ink Markers	28
Paint Markers	27
Water Removable Markers	28
<b>MICRO-MARKERS</b>	<b>8</b>

## PAGE

## INDEX

<b>NUMBERING HEADS</b>	<b>18-21</b>
Auto Indexing Numbering Heads	20-21
Manual Indexing Numbering Heads	18-19
Replacement Numbering Head Wheels	19-20
<b>PRESESSES</b>	<b>22-23, 25-26</b>
Manual Impact Bench Presses	22
Pneumatic Impact Bench Presses	23
Pneumatic Press Modules	25
Press Energy Modules	25
Press Service Parts	26
<b>TYPE (KITS &amp; LOOSE)</b>	<b>11-14, 17</b>
Euro Series	13
Imperial Series	11
Low Stress Type	14
Pryor Series	12
Replacement Type Boxes	17
<b>TYPE HOLDERS &amp; SHANKS</b>	<b>15-16, 18, 20</b>
Hand Held Type Holders	15
Machine Press Type Holders	16
Replacement Type Set Boxes	17
Safety Hand Held Type Holders	15
Shanks	16, 18, 20

## PAGE

